

NEW ZEALAND DATA SHEET

1. PRODUCT NAME

Pharmacor Ticagrelor 90 mg tablets

2. QUALITATIVE AND QUANTITATIVE COMPOSITION

Each film-coated tablet contains 90 mg ticagrelor.

For a full list of excipients, see section 6.1 List of excipients.

3. PHARMACEUTICAL FORM

Film-coated tablet

Round, biconvex, light yellow to yellow, film coated tablet debossed with "90" on one side and "A" over "049" on other side.

4. CLINICAL PARTICULARS

4.1 THERAPEUTIC INDICATIONS

Pharmacor Ticagrelor, co-administered with acetylsalicylic acid (aspirin), is indicated for the prevention of atherothrombotic events (cardiovascular death, myocardial infarction and stroke)

- in patients with Acute Coronary Syndromes (unstable angina [UA], non ST elevation Myocardial Infarction [NSTEMI] or ST elevation Myocardial Infarction [STEMI]); including patients managed medically, and those who are managed with percutaneous coronary intervention (PCI) or coronary artery by-pass grafting (CABG).

For further information, please refer to section 5.1.

4.2 DOSE AND METHOD OF ADMINISTRATION

Acute Coronary Syndromes

In patients with Acute Coronary Syndromes, Pharmacor Ticagrelor treatment should be initiated with a single 180 mg loading dose (two tablets of 90 mg) and then continued at 90 mg twice daily.

Treatment is recommended for at least 12 months unless discontinuation of Pharmacor Ticagrelor is clinically indicated (see section 5.1). After one year, patients initiated on 90 mg twice daily may continue treatment with 60 mg twice daily without interruption, "(Pharmacor Ticagrelor is not available in a 60 mg strength tablet)".

Patients taking Pharmacor Ticagrelor should also take a daily low maintenance dose of aspirin of 75 -150 mg, unless specifically contraindicated. An initial loading dose of aspirin is recommended for patients with ACS (see section 5.1). Discontinuation of ASA may be considered after 3 months in patients with ACS who have undergone a PCI procedure and

have an increased risk of bleeding (see section 4.4).

Dosage Considerations

Premature discontinuation

Premature discontinuation with any antiplatelet therapy, including Pharmacor Ticagrelor, could result in an increased risk of cardiovascular death, myocardial infarction, or stroke due to the patient's underlying disease (see section 4.4). Therefore premature discontinuation of treatment should be avoided.

Missed dose

Lapses in therapy should also be avoided. A patient who misses a dose of Pharmacor Ticagrelor should take their next dose at its scheduled time.

Switching

In patients having an ACS event, the loading dose of 180 mg should be given as soon as possible regardless of any previous antiplatelet treatment.

Physicians who desire to switch patients with a prior ACS event, to Pharmacor Ticagrelor should administer the first dose of Pharmacor Ticagrelor 24 hours following the last dose of the other antiplatelet medication.

Method of administration

For oral use. Pharmacor Ticagrelor can be administered with or without food. For patients who are unable to swallow the tablet(s) whole, Pharmacor Ticagrelor tablets can be crushed to a fine powder and mixed in half a glass of water and drunk immediately. The glass should be rinsed with a further half glass of water and the contents drunk. The mixture can also be administered via a nasogastric tube (CH8 or greater). It is important to flush the nasogastric tube through with water after administration of the mixture.

Special populations

Elderly population

No dose adjustment is required in the elderly (see section 5.2).

Renal impairment

No dose adjustment is necessary for patients with renal impairment (see section 5.2).

Hepatic impairment

No dose adjustment is necessary for patients with mild hepatic impairment. Pharmacor Ticagrelor has not been studied in patients with severe hepatic impairment and there is limited information on treatment of patients with moderate hepatic impairment. Use in patients with severe hepatic impairment is therefore contraindicated (see section 4.3, 4.4 and 5.2).

Paediatric population

The safety and efficacy of Pharmacor Ticagrelor in children below the age of 18 have not been established (see section 5.1).

4.3 CONTRAINDICATIONS

- Hypersensitivity to the ticagrelor or any of the excipients listed in section 6.1 (see section 4.8).
- Active pathological bleeding
- History of intracranial haemorrhage (see section 4.8)
- Severe hepatic impairment (see sections 4.2, 4.4 and 5.2)
- Co-administration of ticagrelor with strong CYP3A4 inhibitors (e.g. ketoconazole, clarithromycin, nefazodone, ritonavir and atazanavir) is contraindicated, as co-administration may lead to a substantial increase in exposure to ticagrelor (see sections 4.5).

4.4 SPECIAL WARNINGS AND PRECAUTIONS FOR USE

Bleeding risk

In the phase 3 pivotal trial (PLATO [PLATelet Inhibition and Patient Outcomes], 18,624 patients) key exclusion criteria included an increased risk for bleeding, clinically important thrombocytopenia or anaemia, previous intracranial bleed, gastrointestinal bleed within the past 6 months or major surgery within the past 30 days. Patients with acute coronary syndromes treated with Pharmacor Ticagrelor and aspirin showed an increased risk of non-CABG major bleeding and also more generally in bleeds requiring medical attention i.e. Major or Minor PLATO bleeds, but not Fatal or Life-threatening bleeds (see section 4.8).

Therefore, the use of Pharmacor Ticagrelor in patients at known increased risk for bleeding should be balanced against the benefit in terms of prevention of atherothrombotic events. If clinically indicated, Pharmacor Ticagrelor should be used with caution in the following patient groups:

- Patients with a propensity to bleed (e.g. due to recent trauma, recent surgery, coagulation disorders, active or recent gastrointestinal bleeding, or moderate hepatic impairment) or who are at increased risk of trauma. The use of Pharmacor Ticagrelor is contraindicated in patients with active pathological bleeding, in those with a history of intracranial haemorrhage and in patients with severe hepatic impairment (see section 4.3).
- Patients with concomitant administration of medicinal products that may increase the risk of bleeding (e.g. non-steroidal anti-inflammatory drugs (NSAIDs), oral anticoagulants, and/or fibrinolytics within 24 hours of Pharmacor Ticagrelor dosing).

Discontinuing ASA after 3 months and continuing with Pharmacor Ticagrelor as single antiplatelet therapy has been shown to decrease the risk of bleeding, with no observed increase in risk of major adverse cardiovascular events (MACE), in patients with ACS who have undergone a PCI procedure. The decision to discontinue ASA and continue with Pharmacor Ticagrelor as single antiplatelet therapy in patients with an increased risk of bleeding should be based on clinical judgment considering the risk of bleeding versus the risk of thrombotic events.

Platelet transfusion did not reverse the antiplatelet effect of Pharmacor Ticagrelor in healthy volunteers and is unlikely to be of clinical benefit in patients with bleeding. Since co-administration of Pharmacor Ticagrelor with desmopressin did not decrease template-bleeding time, desmopressin is unlikely to be effective in managing clinical bleeding events.

Antifibrinolytic therapy (aminocaproic acid or tranexamic acid) and/or recombinant factor VIIa therapy may increase haemostasis. Pharmacor Ticagrelor may be resumed after the

cause of bleeding has been identified and controlled.

Surgery

Patients should be advised to inform physicians and dentists that they are taking Pharmacor Ticagrelor before any surgery is scheduled and before any new medicinal product is taken.

Because of the reversible binding of Pharmacor Ticagrelor restoration of platelet aggregation occurs faster with Pharmacor Ticagrelor compared to clopidogrel. In the OFFSET study, mean Inhibition of Platelet Aggregation (IPA) for Pharmacor Ticagrelor at 72 hours post-dose was comparable to mean IPA for clopidogrel at 120 hours post-dose. The more rapid offset of effect may predict a reduced risk of bleeding complications, e.g. in settings where antiplatelet therapy must be temporarily discontinued due to surgery or trauma.

In PLATO patients undergoing coronary artery bypass grafting (CABG), Pharmacor Ticagrelor had more bleeding than clopidogrel when stopped within 1 day prior to surgery but a similar rate of major bleeds compared to clopidogrel after stopping therapy 2 or more days before surgery (see section 4.8).

If a patient is to undergo elective surgery and antiplatelet effect is not desired, Pharmacor Ticagrelor should be discontinued 5 days prior to surgery (see section 5.1).

Patients with prior ischaemic stroke

ACS patients with prior ischaemic stroke can be treated with Pharmacor Ticagrelor for up to 12 months (PLATO study).

In the absence of data caution is advised for treatment beyond one year.

Patients with moderate hepatic impairment

There is limited experience with Pharmacor Ticagrelor in patients with moderate hepatic impairment therefore caution is advised in these patients. Use of Pharmacor Ticagrelor is contraindicated in patients with severe hepatic impairment (see section 4.2, 4.3 and 5.2).

Bradyarrhythmia

Holter ECG monitoring has shown an increased frequency of mostly asymptomatic ventricular pauses during treatment with ticagrelor compared with clopidogrel. In phase 3 studies evaluating the safety and efficacy of ticagrelor, bradyarrhythmic events were reported in a similar frequency for ticagrelor and comparators (placebo, clopidogrel and aspirin). Patients with an increased risk of bradycardic events (e.g. patients without a pacemaker who have sick sinus syndrome, 2nd or 3rd degree atrioventricular (AV) block or bradycardic-related syncope) have been excluded from ticagrelor outcome studies. Therefore, due to the limited clinical experience in these patients, caution is advised (also see section 5.1).

Bradyarrhythmic events and AV blocks have been reported in the post-marketing setting in patients taking ticagrelor (see section 4.8), primarily in patients with ACS, where cardiac ischemia and concomitant drugs reducing the heart rate or affecting cardiac conduction are potential confounders. The patient's clinical condition and concomitant medication should be assessed as potential causes prior to adjusting treatment.

In addition, caution should be exercised when administering ticagrelor concomitantly with medicinal products known to induce bradycardia. However, no evidence of clinically significant adverse reactions was observed in the PLATO trial after concomitant

administration with one or more medicinal products known to induce bradycardia (e.g. 96% beta blockers, 33% calcium channel blockers diltiazem and verapamil, and 4% digoxin) (see section 4.5).

During the Holter substudy in PLATO, more patients had ventricular pauses ≥ 3 seconds with ticagrelor than with clopidogrel during the acute phase of their ACS. The increase in Holter-detected ventricular pauses with ticagrelor was higher in patients with chronic heart failure (CHF) than in the overall study population during the acute phase of ACS, but not at one month with ticagrelor or compared to clopidogrel. There were no adverse clinical consequences associated with this imbalance (including syncope or pacemaker insertion) in this patient population (see section 5.1).

Dyspnoea

Dyspnoea, usually mild to moderate in intensity and often resolving without need for treatment discontinuation, is reported in patients treated with ticagrelor. Patients with asthma/COPD may have an increased absolute risk of experiencing dyspnoea with ticagrelor (see section 4.8). Ticagrelor should be used with caution in patients with history of asthma and/or COPD. The mechanism has not been elucidated. If a patient reports new, prolonged or worsened dyspnoea this should be investigated fully and if not tolerated, treatment with Pharmacor Ticagrelor should be stopped.

Central Sleep Apnoea

Central sleep apnoea including Cheyne-Stokes respiration has been reported in the postmarketing setting in patients taking ticagrelor. If central sleep apnoea is suspected, further clinical assessment may be considered.

Thrombotic Thrombocytopenic Purpura (TTP)

Thrombotic Thrombocytopenic Purpura has been reported very rarely with the use of ticagrelor. TTP is a serious condition and requires prompt treatment.

Interference with Laboratory Tests

Platelet function tests to diagnose Heparin induced thrombocytopenia (HIT)

False negative results in platelet function test for heparin induced thrombocytopenia (HIT) have been reported in patients administered ticagrelor. This is related to inhibition of the P2Y₁₂-receptor on the healthy donor platelets in the test by ticagrelor in the patient's sera/plasma. Information on concomitant treatment with ticagrelor is required for interpretation of HIT platelet function tests.

Before considering discontinuation of ticagrelor, the benefit and risk of continued treatment should be assessed, taking both the prothrombotic state of HIT and the increased risk of bleeding with concomitant anticoagulant and ticagrelor treatment into consideration.

Other

Based on a relationship observed in the PLATO study between maintenance aspirin dose and relative efficacy of ticagrelor compared to clopidogrel, co-administration of ticagrelor and high maintenance dose aspirin (>300 mg) is not recommended (see section 5.1).

Discontinuation

Patients who require discontinuation of Pharmacor Ticagrelor are at increased risk for cardiac events or stroke. Premature discontinuation of treatment should be avoided. If Pharmacor Ticagrelor must be temporarily stopped due to an adverse event(s), it should be re-initiated as soon as possible when the benefits outweigh the risks of the adverse event or

when the adverse event has come to resolution (see section 4.2).

4.5 INTERACTION WITH OTHER MEDICINES AND OTHER FORMS OF INTERACTION

Ticagrelor is primarily a CYP3A4 substrate and a mild inhibitor of CYP3A4. Ticagrelor is also a P-gp substrate and a weak P-gp inhibitor and may increase the exposure of P-gp substrates.

Effects of other Drugs on ticagrelor

Medicinal products metabolised by CYP3A4

Ketoconazole (Strong CYP3A4 inhibitors)

Co-administration of ketoconazole with ticagrelor increased the ticagrelor C_{max} and AUC equal to 2.4-fold and 7.3-fold, respectively. The C_{max} and AUC of the active metabolite were reduced by 89% and 56%, respectively. Other strong inhibitors of CYP3A4 (clarithromycin, nefazodone, ritonavir and atazanavir) would be expected to have similar effects and therefore concomitant use with ticagrelor is contraindicated (see section 4.3).

Diltiazem (Moderate CYP3A4 inhibitors)

Co-administration of diltiazem and ticagrelor increased the ticagrelor C_{max} by 69% and AUC by 174%, and decreased the active metabolite C_{max} by 38% and AUC was unchanged. There was no effect of ticagrelor on diltiazem plasma levels. Other moderate CYP3A4 inhibitors (e.g. amprenavir, aprepitant, erythromycin and fluconazole) would be expected to have a similar effect and can as well be co-administered with ticagrelor.

Rifampicin and Other CYP3A Inducers

Co-administration of rifampicin with ticagrelor decreased ticagrelor C_{max} and AUC by 73% and 86%, respectively. The C_{max} of the active metabolite was unchanged and the AUC was decreased by 46%, respectively. Other CYP3A4 inducers (e.g. phenytoin, carbamazepine and phenobarbital) would be expected to decrease the exposure to ticagrelor as well. Co-administration of ticagrelor with potent CYP3A inducers may decrease exposure and efficacy of ticagrelor therefore their concomitant use with ticagrelor is discouraged.

Cyclosporine (PgP and CYP3A inhibitor)

Co-administration of cyclosporine (600 mg) with ticagrelor increased ticagrelor C_{max} and AUC equal to 2.3-fold and 2.8-fold, respectively. The AUC of the active metabolite was increased by 32% and C_{max} was decreased by 15% in the presence of cyclosporine. There was no effect of ticagrelor on cyclosporine blood levels.

Others

Clinical pharmacology interaction studies showed that co-administration of ticagrelor with heparin, enoxaparin, and aspirin did not have any effect on ticagrelor or the active metabolite plasma levels. Co-administration of ticagrelor and heparin had no effect on heparin based on activated partial thromboplastin time (aPTT) and activated coagulation time (ACT) assays. Co-administration of ticagrelor and enoxaparin had no effect on enoxaparin based on factor Xa assay.

No data are available on concomitant use of ticagrelor with other medicines that also are potent P-glycoprotein (P-gp) inhibitors and moderate CYP3A4 inhibitors (e.g. verapamil, quinidine) that also may increase ticagrelor exposure. If the association cannot be avoided, their concomitant use should be made with caution.

Delayed and decreased exposure to oral P2Y₁₂ inhibitors, including ticagrelor and its active metabolite, has been reported in patients treated with morphine (approximately 35% reduction in ticagrelor). This interaction may be related to reduced gastrointestinal motility, and therefore apply to other opioids. The clinical relevance is unknown.

Effects of Ticagrelor on other drugs

Medicinal products metabolised by CYP3A4

Simvastatin

Co-administration of ticagrelor with simvastatin increased simvastatin C_{max} by 81% and AUC by 56% and increased simvastatin acid C_{max} by 64% and AUC by 52% with some individual increases equal to 2 to 3-fold. Co-administration of ticagrelor with doses of simvastatin exceeding 40 mg daily could cause adverse effects of simvastatin and should be weighed against potential benefits. There was no effect of simvastatin on ticagrelor plasma levels. Ticagrelor may have similar effect on lovastatin, but is not expected to have a clinically meaningful effect on other statins. The concomitant use of ticagrelor with doses of simvastatin or lovastatin greater than 40 mg is not recommended.

Atorvastatin

Co-administration of atorvastatin and ticagrelor increased atorvastatin acid C_{max} by 23% and AUC by 36%. Similar increases in AUC and C_{max} were observed for all atorvastatin acid metabolites. These increases are not considered clinically significant.

A similar effect on other statins metabolised by CYP3A4 cannot be excluded. Patients in PLATO receiving ticagrelor took a variety of statins, with no concern of an association with statin safety among the 93% of the PLATO cohort taking these medicinal products.

Other

Ticagrelor is a mild CYP3A4 inhibitor. Co-administration of ticagrelor and CYP3A4 substrates with narrow therapeutic indices (i.e. cisapride or ergot alkaloids) is not recommended, as ticagrelor may increase the exposure to these medicinal products.

Medicinal products metabolised by CYP2C9 – Tolbutamide

Co-administration of ticagrelor with tolbutamide resulted in no change in the plasma levels of either medicinal product, which suggest that ticagrelor is not a CYP2C9 inhibitor and unlikely to alter the CYP2C9 mediated metabolism of medicinal products like warfarin and tolbutamide.

Oral contraceptives

Co-administration of ticagrelor and levonorgestrel and ethinyl oestradiol increased ethinyl oestradiol exposure by approximately 20% but did not alter the pharmacokinetics of levonorgestrel. No clinically relevant effect on oral contraceptive efficacy is expected when levonorgestrel and ethinyl oestradiol are co-administered with ticagrelor.

Digoxin (P-gp substrate)

Concomitant administration of ticagrelor increased the digoxin C_{max} by 75% and AUC by 28%. The mean trough digoxin levels were increased about 30% with ticagrelor co-administration with some individual maximum increases to 2 fold. In the presence of digoxin, the C_{max} and AUC of ticagrelor and its active metabolite were not affected. Therefore, appropriate clinical and/or laboratory monitoring is recommended when giving narrow therapeutic index P-gp dependent medicinal products like digoxin concomitantly with ticagrelor.

Medicinal products known to induce bradycardia

Due to observations of mostly asymptomatic ventricular pauses and bradycardia, caution should be exercised when administering ticagrelor concomitantly with medicinal products known to induce bradycardia (see section 4.4). However no evidence of clinically significant adverse reactions was observed in the PLATO trial after concomitant administration with one or more medicinal products known to induce bradycardia (e.g. 96% beta blockers, 33% calcium channel blockers diltiazem and verapamil and 4% digoxin).

Rosuvastatin (BCRP substrate)

Ticagrelor has been shown to increase rosuvastatin concentrations, which may result in increased risk of myopathy. Consideration should be given to the benefits of prevention of major adverse cardiovascular events by use of rosuvastatin and the risks with increased rosuvastatin plasma concentrations.

Other concomitant therapy

In clinical studies, ticagrelor was commonly administered with aspirin, proton pump inhibitors, statins, beta-blockers, angiotensin converting enzyme inhibitors and angiotensin receptor blockers as needed for concomitant conditions for long-term and also heparin, low molecular weight heparin and intravenous GpIIb/IIIa inhibitors for short durations (see section 5.1). No evidence of clinically significant adverse interactions with these medicinal products was observed.

Co-administration of ticagrelor with heparin, enoxaparin or desmopressin had no effect on activated partial thromboplastin time (aPTT), activated coagulation time (ACT) or factor Xa assays. However, due to potential pharmacodynamic interactions, caution should be exercised with the concomitant administration of ticagrelor with medicinal products known to alter haemostasis.

Due to reports of cutaneous bleeding abnormalities with SSRIs (e.g. paroxetine, sertraline and citalopram), caution is advised when administering SSRIs with ticagrelor as this may increase the risk of bleeding.

4.6 FERTILITY, PREGNANCY AND LACTATION

Pregnancy

Women of childbearing potential

Women of childbearing potential should use appropriate contraceptive measures to avoid pregnancy during ticagrelor therapy.

Pregnancy

There are no or limited amount of data from the use of ticagrelor in pregnant women. Studies in animals have shown reproductive toxicity (see section 5.3). Pharmacor Ticagrelor is not recommended during pregnancy.

Breastfeeding

It is not known whether ticagrelor is excreted in human milk. Studies in rats have shown that ticagrelor and its active metabolites are excreted in the milk. The use of ticagrelor during breastfeeding is not recommended.

Fertility

Ticagrelor had no effect on male or female fertility in animals (see section 5.3).

4.7 EFFECTS ON ABILITY TO DRIVE AND USE MACHINES

No studies on the effects of ticagrelor on the ability to drive and use machines have been performed. Pharmacor Ticagrelor is expected to have no or negligible influence on the ability to drive and use machines. During treatment with ticagrelor, dizziness and confusion have been reported. Therefore, patients who experience these symptoms should be cautious while driving or using machines.

4.8 UNDESIRABLE EFFECTS

Summary of the safety profile

The safety profile of ticagrelor has been evaluated in two large phase 3 outcome trials (PLATO and PEGASUS) including more than 39,000 patients (see section 5.1). The relevant adverse drug reactions observed in these studies are discussed below.

The safety of ticagrelor in patients with acute coronary syndromes (UA, NSTEMI and STEMI) was evaluated in the PLATO study, which compared patients treated with ticagrelor 90 mg twice daily to patients treated with clopidogrel 75 mg once daily, both given in combination with acetylsalicylic acid (aspirin) and other standard therapies. Median treatment duration for ticagrelor was 277 days. In PLATO, patients on ticagrelor had a higher incidence of discontinuation due to adverse events than clopidogrel (7.4% vs. 5.4%).

The most commonly reported adverse drug reactions in patients treated with ticagrelor were bleeding and dyspnoea (also see section 4.4).

Tabulated summary of adverse drug reactions

Adverse drug reactions from the PLATO and PEGASUS clinical studies with ticagrelor (Table 1) are listed by MedDRA System Organ Class (SOC) and frequency category. Within each SOC and frequency category, adverse drug reactions are presented in order of decreasing seriousness. Frequency categories are defined according to the following conventions: Very common ($\geq 1/10$), Common ($\geq 1/100$ to $< 1/10$), Uncommon ($\geq 1/1,000$ to $< 1/100$), Rare ($\geq 1/10,000$ to $< 1/1,000$), Very rare ($< 1/10,000$), Not known (cannot be estimated from the available data).

Table 1 Adverse Drug reactions observed in PLATO and PEGASUS phase 3 clinical studies

System Organ Classification	Very Common	Common	Uncommon
<i>Neoplasms benign, malignant and unspecified (including cysts and polyps)</i>			Tumour bleedings ^b
<i>Blood and lymphatic system disorders</i>	Blood disorder bleedings ^c		

<i>Metabolism and nutrition disorders</i>	Hyperuricaemia ^a	Gout	
<i>Psychiatric disorders</i>			Confusion
<i>Nervous system disorders</i>		Dizziness, Syncope	Intracranial haemorrhage ^l
<i>Eye disorders</i>			Eye haemorrhage ^d
<i>Ear and labyrinth disorders</i>		Vertigo	Ear haemorrhage
<i>Vascular disorders</i>		Hypotension	
<i>Respiratory, thoracic and mediastinal disorders</i>	Dyspnoea	Respiratory system bleedings ^e	
<i>Gastrointestinal Disorders</i>		Gastrointestinal haemorrhage ^f , Diarrhoea, Nausea	Retroperitoneal haemorrhage
<i>Skin and subcutaneous tissue disorders</i>		Subcutaneous or dermal bleeding ^g , Pruritus	
<i>Musculoskeletal connective tissue and bone</i>			Muscular bleedings ^h
<i>Renal and urinary disorders</i>		Urinary tract bleeding ⁱ	
<i>Reproductive system and breast disorders</i>			Reproductive system bleedings ^j
<i>Investigations</i>		Blood creatinine increased ^a	
<i>Injury, poisoning and procedural complications</i>		Post procedural haemorrhage, Traumatic bleedings ^k	

a) Frequencies derived from lab observations (Uric acid increases to >ULN from baseline below or within reference range. Creatinine increases of >50% from baseline) and not crude adverse event report frequency

b) e.g. bleeding from bladder cancer, gastric cancer, colon cancer.

c) e.g. increased tendency to bruise, spontaneous haematoma, haemorrhagic diathesis.

d) e.g. conjunctival, retinal, intraocular bleeding.

e) e.g. epistaxis, haemoptysis.

f) e.g. gingival bleeding, rectal haemorrhage, gastric ulcer haemorrhage.

g) e.g. ecchymosis, skin haemorrhage, petechiae.

h) e.g. haemarthrosis, muscle haemorrhage.

i) e.g. haematuria, cystitis haemorrhagic.

j) e.g. vaginal haemorrhage, haematospermia, postmenopausal haemorrhage.

k) e.g. contusion, traumatic haematoma, traumatic haemorrhage.

l) e.g. spontaneous, procedure related or traumatic intracranial haemorrhage.

Description of selected adverse drug reactions

Bleeding findings in PLATO

Overall outcome of bleeding events in the PLATO study are shown in Table 2.

Table 2 Analysis of Overall Bleeding Events, Kaplan-Meier estimate of bleeding rates by treatment at 12 months (PLATO)

SafetyEndpoint	Ticagrelor 90 mg twice daily N=9235		Clopidogrel 75 mg once daily N=9186	p-value
	KM%	Hazard Ratio (95% CI)	KM%	
PLATO-defined bleeding categories				
Primary Safety Endpoint PLATO-defined Total Major	11.6	1.04 (0.95, 1.13)	11.2	0.4336
Secondary Endpoints Major Fatal/Life-Threatening	5.8	1.03 (0.90, 1.16)	5.8	0.6988
PLATO Total Major + Minor	16.1	1.11 (1.03, 1.20)	14.6	0.0084
PLATO Non-CABG Major	4.5	1.19 (1.02, 1.38)	3.8	0.0264
PLATO Non-Procedural Major	3.1	1.31 (1.08, 1.60)	2.3	0.0058
PLATO Non-Procedural Major or Minor	5.9	1.39 (1.21, 1.60)	4.3	<0.0001
TIMI-defined bleeding category				
TIMI-defined Major	7.9	1.03 (0.93, 1.15)	7.7	0.5669
TIMI Major or Minor	11.4	1.05 (0.96, 1.15)	10.9	0.3272

Bleeding category definitions:

PLATO Major Fatal/Life-threatening: Fatal bleeding, OR any intracranial bleeding, OR intrapericardial with cardiac tamponade, OR with hypovolaemic shock or severe hypotension requiring pressors/inotropes or surgery OR clinically apparent with >50 g/L decrease in haemoglobin, OR ≥4 red cell units transfused.

PLATO Major Other: Significantly disabling, OR, clinically apparent with 30-50 g/L decrease in haemoglobin or 2-3 red cell units transfused.

PLATO Minor: Requires medical intervention to stop or treat bleeding.

TIMI Major: Fatal bleeding, OR any intracranial bleeding, OR clinically overt signs of haemorrhage associated with a drop in haemoglobin (Hgb) of ≥50 g/L, or when Hgb is not available, a fall in haematocrit (Hct) of ≥15%.

TIMI Minor: Clinically apparent with 30-50 g/L decrease in haemoglobin.

In PLATO, time to first PLATO-defined Total Major bleeding for ticagrelor did not differ significantly from that of clopidogrel. There were few fatal bleeding events in the study, 20 (0.2%) for ticagrelor 90mg twice daily and 23 (0.3%) for clopidogrel 75mg once daily. When minor bleeding was included, combined PLATO-defined Major and Minor bleeding events were significantly higher on ticagrelor than on clopidogrel. Overall rates of TIMI-defined bleeding events did not differ significantly between ticagrelor and clopidogrel.

CABG-related bleeding: In PLATO, 42% of the 1584 patients (12% of cohort) who underwent coronary artery bypass graft (CABG) surgery had a PLATO-defined Major Fatal/Life-threatening bleeding with no difference between the treatment groups. Fatal CABG bleeding occurred in 6 patients in each treatment group (see section 4.4).

Non-CABG related bleeding and non-procedural related bleeding: Ticagrelor and clopidogrel did not differ in non-CABG PLATO-defined Major Fatal/Life-threatening bleeding, but PLATO-defined Total Major, TIMI Major, and TIMI Major + Minor bleeding were more common with ticagrelor. Similarly, when removing all procedure related bleeds, more bleeding occurred with ticagrelor than with clopidogrel (Table 2). Discontinuation of treatment due to non-procedural bleeding was more common for ticagrelor (2.9%) than for clopidogrel (1.2%; $p < 0.001$).

Age, gender, weight, ethnicity, geographic region, concurrent conditions, concomitant therapy, and medical history, including a previous stroke or transient ischaemic attack, all did not predict either overall or non-procedural PLATO-defined Major bleeding. Thus no particular group was identified at risk for any subset of bleeding.

Intracranial bleeding: There were more intracranial non-procedural bleeds with ticagrelor ($n=27$ bleeds in 26 patients, 0.3%) than with clopidogrel ($n=14$ bleeds, 0.2%), of which 11 bleeds with ticagrelor and one with clopidogrel were fatal. There was no difference in overall fatal bleeds. The percentage of intracranial bleeding was low in both treatment groups given the significant comorbidity and cardiovascular risk factors of the population under study.

Dyspnoea

In PLATO, dyspnoea adverse events were reported in 13.8% of patients taking ticagrelor 90 mg twice daily and in 7.8% in patients taking clopidogrel 75 mg once daily. Most reported dyspnoea adverse events were mild to moderate in intensity and often resolved without the need of treatment discontinuation. Dyspnoea was usually reported in the initial phase of treatment and 87% of the patients who reported dyspnoea experienced a single episode. Dyspnoea serious adverse events were reported in 0.7% taking ticagrelor and 0.4% taking clopidogrel. Patients who reported dyspnoea tended to be older and more frequently had dyspnoea, CHF, COPD, or asthma at baseline. PLATO data do not suggest that the higher frequency with ticagrelor is due to new or worsening heart or lung disease. There was no indication of an adverse effect of ticagrelor on pulmonary function (see section 4.4).

Postmarketing experience

The following adverse reactions have been identified during post-approval use of ticagrelor. Because these reactions are reported voluntarily from a population of an unknown size, it is not always possible to reliably estimate their frequency.

Immune system disorders: Hypersensitivity reactions including angioedema (see section 4.3)

Skin and subcutaneous tissue disorders: Rash

Blood disorders: Thrombotic Thrombocytopenic Purpura (see section 4.4)

Cardiac disorders: Bradyarrhythmia, AV block (see section 4.4)

Nervous system disorders: Central sleep apnoea including Cheyne-Stokes respiration (see section 4.4)

Reporting of suspected adverse reactions

Reporting suspected adverse reactions after authorisation of the medicine is important. It allows continued monitoring of the benefit/risk balance of the medicine. Healthcare professionals are asked to report any suspected adverse reactions via <https://pophealth.my.site.com/carmreportnz/s>.

4.9 OVERDOSE

There is currently no known antidote to reverse the effects of ticagrelor, and ticagrelor is not dialysable (see section 5.2). Treatment of overdose should follow local standard medical practice. The expected effect of excessive ticagrelor dosing is prolonged duration of bleeding risk associated with platelet inhibition. If bleeding occurs appropriate supportive measures should be taken.

Ticagrelor is well tolerated in single doses up to 900 mg. Gastrointestinal toxicity was dose-limiting in a single ascending dose study. Other clinically meaningful adverse effects which may occur with overdose include dyspnoea and ventricular pauses (see section 4.8).

In the event of overdose, observe for these potential adverse reactions and consider ECG monitoring.

For advice on the management of overdose please contact the National Poisons Centre on 0800 POISON (0800 764 766).

5. PHARMACOLOGICAL PROPERTIES

5.1 PHARMACODYNAMIC PROPERTIES

Pharmacotherapeutic group: Platelet aggregation inhibitors excluding heparin, ATC code: B01AC24

Mechanism of action

Ticagrelor contains ticagrelor a member of the chemical class cyclopentyltriazolopyrimidines (CPTP), which is an oral, direct acting selective and reversibly binding P2Y₁₂ receptor antagonist that prevents adenosine diphosphate (ADP)-mediated P2Y₁₂ dependent platelet activation and aggregation. Ticagrelor does not prevent ADP binding but when bound to the P2Y₁₂ receptor prevents ADP-induced signal transduction. Since platelets participate in the initiation and/or evolution of thrombotic complications of atherosclerotic disease, inhibition of platelet function has been shown to reduce the risk of cardiovascular events such as CV death, myocardial infarction, or stroke.

Ticagrelor has an additional mechanism of action, increasing local endogenous adenosine levels by inhibiting equilibrative nucleoside transporter-1 (ENT-1). Adenosine is formed locally at sites of hypoxia and tissue damage through degradation of released adenosine tri- and di-phosphate (ATP and ADP). As adenosine degradation is essentially restricted to the intracellular space, inhibition of ENT-1 by ticagrelor prolongs the half-life of adenosine and

thereby increases its local extracellular concentration providing enhanced local adenosine responses. Ticagrelor has no clinically significant direct effect on adenosine receptors (A1, A2A, A2B, A3) and is not metabolised to adenosine. Adenosine has been documented to have a number of effects that include: vasodilation, cardioprotection, platelet inhibition, modulation of inflammation and induction of dyspnoea, which may contribute to the clinical profile of ticagrelor.

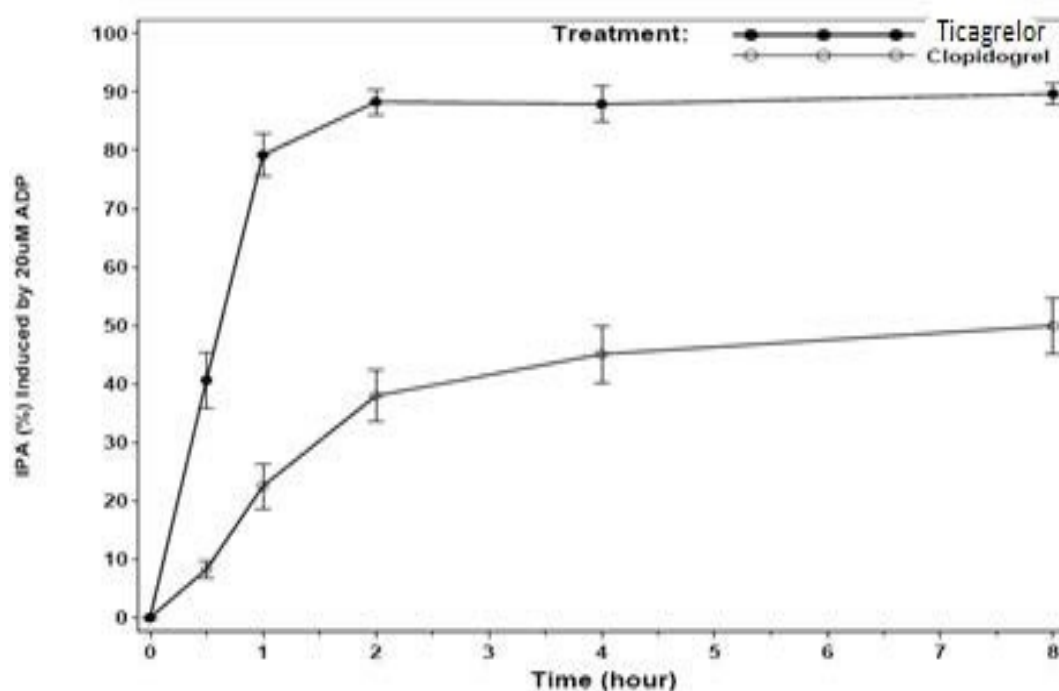
Pharmacodynamic effects

Onset of Action

The inhibition of platelet aggregation (IPA) by ticagrelor and clopidogrel was compared in a 6-week study examining both acute and chronic platelet inhibition effects in response to 20 μ M ADP as the platelet aggregation agonist in patients with stable coronary artery disease (CAD) on aspirin. The onset was evaluated following a loading dose of 180 mg ticagrelor or 600 mg clopidogrel.

Ticagrelor demonstrates a rapid onset of pharmacological effect as demonstrated by a mean IPA for ticagrelor at 0.5 hours after 180 mg loading dose of about 41%, with the maximum IPA effect of 87.9% to 89.6% by 2-4 hours post dose. 90% of patients had final extent IPA >70% by 2 hours post dose. The high IPA effect of ticagrelor between 87%-89% was maintained between 2-8 hours.

Figure 1 Mean final extent Inhibition (\pm SE) of Platelet Aggregation (IPA) following single oral doses of 180 mg Ticagrelor or 600 mg clopidogrel in patients with stable CAD



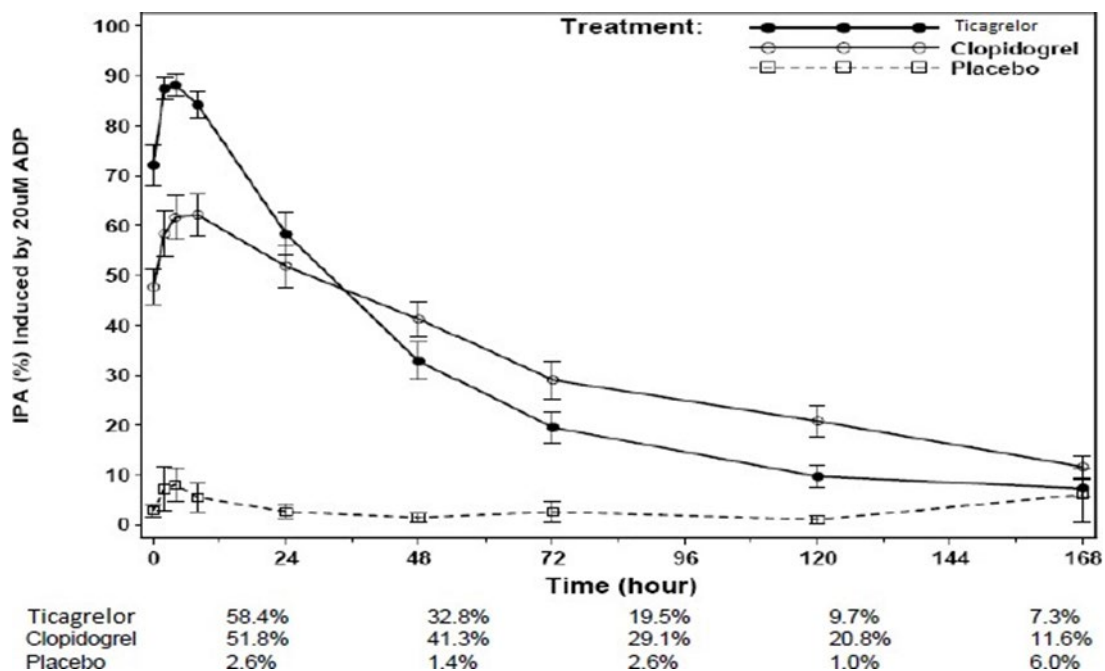
Offset of Effect

The offset was examined after 6 weeks on ticagrelor 90 mg twice daily or clopidogrel 75 mg once daily, again in response to 20 μ M ADP. After the ticagrelor concentrations decline to a level less than that required for receptor saturation, IPA gradually decreases with declining plasma concentrations. Since ticagrelor binds reversibly, the recovery of platelet function does not depend on replacement of platelets. Ticagrelor has a faster rate of offset of IPA as

compared to clopidogrel as determined by the slope of offset from 4-72 hours after last dose (see section 4.4).

Median final extent IPA measured after the last dose of ticagrelor is approximately 20-30% higher for ticagrelor compared to clopidogrel. However, by 24 hours post-dose, %IPA is similar between ticagrelor and clopidogrel, and is lower for ticagrelor from 72 hours through 7 days compared with the clopidogrel. Mean %IPA for ticagrelor at 72 hours (Day 3) post last dose was comparable to clopidogrel at Day 5, and %IPA for ticagrelor at Day 5 was similar to clopidogrel at Day 7, which is not statistically different from placebo.

Figure 2 Mean final extent Inhibition (\pm SE) of Platelet Aggregation (IPA) following the last maintenance dose of 90 mg twice daily Ticagrelor or 75 mg clopidogrel once daily or placebo



Responders to ticagrelor

IPA induced by ticagrelor has less variability at peak plasma concentrations of ticagrelor observed with the 90 mg twice daily dose compared to clopidogrel 75 mg once daily. Patients with stable CAD predetermined to have low IPA response to clopidogrel (nonresponders), and given a concomitant dose of aspirin, exhibited higher mean IPA response after administration of ticagrelor as compared to clopidogrel. In non-responders to clopidogrel, the IPA response to ticagrelor was observed to be higher and more consistent. Ticagrelor treatment resulted in consistently higher IPA compared with clopidogrel, and this was apparent post dose for both responders and non-responders.

Switching data

Switching from clopidogrel 75 mg once daily to ticagrelor 90 mg twice daily results in an absolute IPA increase of 26.4% and switching from ticagrelor to clopidogrel results in an absolute IPA decrease of 24.5%. Patients can be switched from clopidogrel to ticagrelor without interruption of anti-platelet effect (see section 4.2).

Adenosine mechanism (ENT-1)

Ticagrelor increased plasma adenosine concentrations in ACS patients and has been shown to augment several physiological responses to adenosine. Adenosine is a vasodilator; ticagrelor has been shown to augment adenosine-induced coronary blood flow increases in healthy volunteers and ACS patients. Adenosine is an endogenous platelet inhibitor;

ticagrelor has been shown to augment adenosine-mediated inhibition of platelet aggregation in addition to platelet inhibition due to its P2Y₁₂ antagonism. Adenosine has been linked to the cardio-protective effect of preconditioning; ticagrelor has been shown to reduce infarct size via an adenosine-mediated mechanism in a rat model of reperfusion injury. Adenosine also induces dyspnoea; ticagrelor has been shown to augment adenosine-induced dyspnoea in healthy volunteers. Thus, the dyspnoea observed in some patients taking ticagrelor (see section 4.8) may partly be mediated by adenosine.

Clinical efficacy and safety

The clinical evidence for the efficacy of ticagrelor is derived from two phase 3 trials:

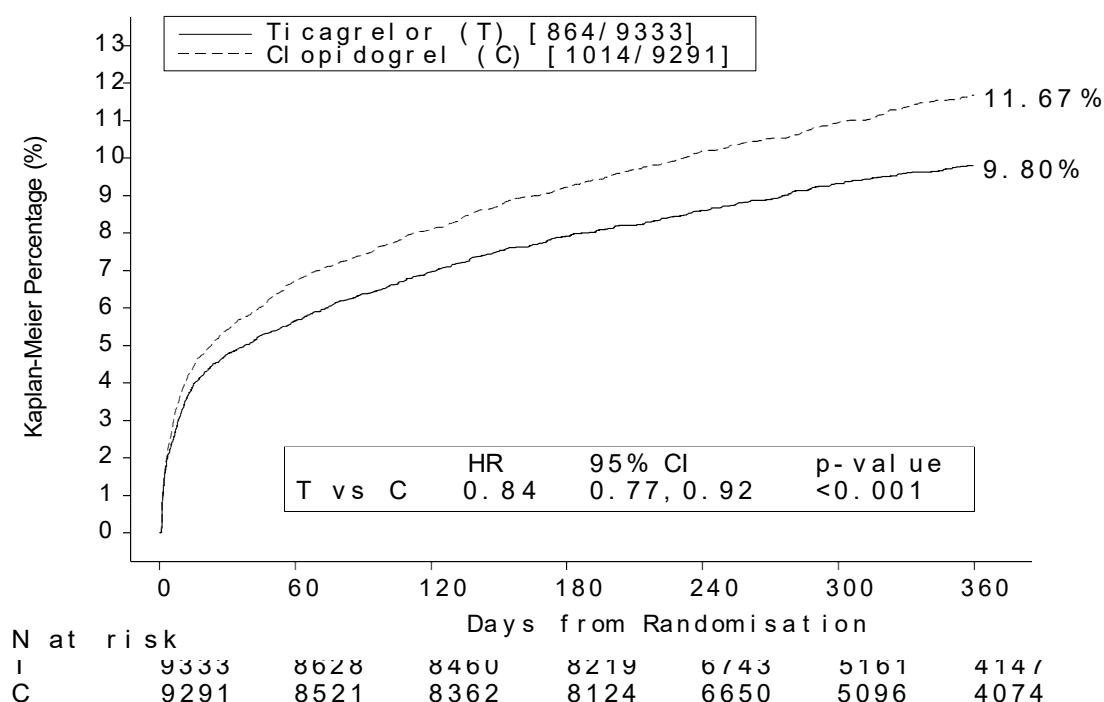
- The PLATO [PLATElet Inhibition and Patient Outcomes] study, a comparison of ticagrelor to clopidogrel, both given in combination with aspirin and other standard therapy.

PLATO study (Acute Coronary Syndromes)

The PLATO Study was a 18,624 patient randomised, double-blind, parallel group, phase 3, efficacy and safety study of ticagrelor compared with clopidogrel for prevention of thrombotic events (CV death, MI and stroke) in patients with ACS (unstable angina, non ST elevation MI [NSTEMI] or ST elevation MI [STEMI]).

The study was comprised of patients who presented within 24 hours of onset of the most recent episode of chest pain or symptoms. Patients were randomised to receive clopidogrel (75 mg once daily, with an initial loading dose of 300 mg), or a loading dose of 180 mg of ticagrelor followed by a maintenance dose of 90 mg of ticagrelor twice daily. Patients could have been medically managed, treated with PCI or CABG.

Figure 3 Kaplan-Meier plot and analysis of the primary clinical composite endpoint of CV Death, MI and Stroke in PLATO (full analysis set)



Ticagrelor reduced the occurrence of the primary composite endpoint compared to clopidogrel in both the UA/NSTEMI and STEMI population.

Table 3 Analysis of primary and secondary efficacy endpoints in PLATO (full analysis set)

Primary Endpoints	Patients with Events		Relative Risk Reduction ^a %	Hazard Ratio (95% CI)	p-value
	Ticagrelor 90 mg twice daily (%) N=9333	Clopidogrel 75 mg once daily (%) N=9291			
Composite of CV Death/MI (excl. silent MI)/Stroke	9.3	10.9	16	0.84 (0.77, 0.92)	p=0.0003
CVDeath	3.8	4.8	21	0.79 (0.69, 0.91)	p=0.0013
MI (excl. silent MI)	5.4	6.4	16	0.84 (0.75, 0.95)	p=0.0045
Stroke	1.3	1.1	-17	1.17 (0.91, 1.52)	p=0.2249
Secondary Endpoints					
Composite of CV Death/MI (excl. silent MI)/Stroke – intent to invasively manage ^a	8.5	10.0	16	0.84 (0.75, 0.95)	p=0.0025
Composite of all cause mortality/MI (excl. silent MI)/Stroke	9.7	11.5	16	0.84 (0.77, 0.92)	p=0.0001
Composite of CV Death/Total MI/Stroke/SRI ^b /RI ^c /TIA ^d /Other ATE ^e	13.8	15.7	12	0.88 (0.81, 0.95)	p=0.0006
All-cause mortality	4.3	5.4	22	0.78 (0.69, 0.89)	p = 0.0003**

^aRRR = (1-Hazard Ratio) x 100%. Values with a negative relative risk reduction indicate a relative risk increase

**nominal p-value.

^bSRI = Severe Recurrent Cardiac Ischaemia.

^cRI = Recurrent Cardiac Ischaemia.

^dTIA = Transient Ischemic Attack.

^eATE = Arterial Thrombotic events.

Ticagrelor is superior to clopidogrel in the prevention of thrombotic events (relative risk reduction [RRR] 16%, absolute risk reduction [ARR] 1.9%, NNT =54) of the composite efficacy endpoint (CV death, MI and stroke) over 12 months. The difference in treatments was driven by CV death and MI with no difference on strokes. Ticagrelor demonstrated a statistically significant RRR of 16% (ARR 1.1%) for MI and a 21% relative risk reduction (ARR 1.1%) for CV death. Treating 91 patients with Ticagrelor instead of clopidogrel will prevent 1 CV death.

Ticagrelor showed superiority to clopidogrel in preventing the composite endpoint (CV death, MI, or stroke). This result appeared early (ARR 0.6% and RRR of 12% at 30 days), with a constant treatment effect over the entire 12 month period, yielding ARR 1.9% per year with RRR of 16%. This suggests it is appropriate to treat for at least 12 months (see section 4.2).

In PLATO, a large number of subgroup comparisons were conducted for the primary efficacy endpoint to assess the robustness and consistency of the overall benefit. The treatment effect of Ticagrelor over clopidogrel appears consistent across multiple patient subgroups by demographic characteristics including weight, gender, medical history, concomitant therapy, and by final index event diagnosis (STEMI, NSTEMI, and UA).

A weakly significant treatment interaction was observed with region whereby the hazard ratio for the primary endpoint favours Ticagrelor in the rest of world but favours clopidogrel in North America, which represented approximately 10% of the overall population studied (interaction p-value=0.045).

This apparent treatment-by-region interaction observed in PLATO could plausibly be attributed to chance, at least in part. Additional analyses suggest that the efficacy of ticagrelor relative to clopidogrel is associated with aspirin dose during maintenance therapy. The data show greater efficacy of ticagrelor compared to clopidogrel when used in conjunction with low maintenance dose aspirin (75-150 mg). The relative efficacy of ticagrelor versus clopidogrel when used with high doses of aspirin (>300 mg) is less certain. Based on this observed relationship between maintenance aspirin dose and relative efficacy of ticagrelor compared to clopidogrel, it is recommended that ticagrelor is used with a low maintenance dose of aspirin 75-150 mg (see sections 4.2 and 4.4).

The benefits associated with ticagrelor were also independent of the use of other acute and long-term cardiovascular therapies, including heparin, low molecular weight heparin (LMWH), intravenous GpIIb/IIIa inhibitors, lipid-lowering drugs, beta-blockers, angiotensin-converting enzyme (ACE) inhibitors, angiotensin II receptor antagonists and proton pump inhibitors (see section 4.5).

Ticagrelor demonstrated a statistically significant RRR in the composite endpoint of CV death, MI and stroke in ACS patients planned for invasive management (RRR 16%, ARR 1.7%, p=0.0025). In an exploratory analysis, ticagrelor demonstrated a RRR of the primary composite endpoint in ACS patients intended for medical management (RRR 15%, ARR 2.3%, nominal p=0.0444). Consistent with the primary endpoint of the study, the effect in these two groups was driven by CV death and MI with no effect on stroke. In patients receiving stents there were numerically fewer definite stent thromboses among patients treated with ticagrelor compared to clopidogrel (73 vs. 107, RRR 32%, ARR 0.6%, nominal p=0.0123).

Ticagrelor demonstrated a statistically significant RRR of 16% (ARR 2.1%) for the composite of all-cause mortality, MI and stroke compared to clopidogrel.

The final secondary endpoint (all-cause mortality) was evaluated. Ticagrelor demonstrated a RRR of 22% for all-cause mortality compared to clopidogrel at a nominal significance level of p=0.0003 and an ARR of 1.4%.

Holter Substudy

To study the occurrence of ventricular pauses and other arrhythmic episodes during PLATO, investigators performed Holter monitoring in a subset of nearly 3000 patients, of whom approximately 2000 had recordings both in the acute phase of their ACS and after one month. The primary variable of interest was the occurrence of ventricular pauses ≥ 3 seconds. More patients had ventricular pauses with ticagrelor (6.0%) than with clopidogrel (3.5%) in the acute phase; and 2.2% and 1.6%, respectively, after 1 month (see section 4.4). The increase in ventricular pauses in the acute phase of ACS was more pronounced in

ticagrelor patients with history of CHF (9.2% versus 5.4% in patients without CHF history; for clopidogrel patients, 4.0% in those with versus 3.6% in those without CHF history). This

imbalance did not occur at one month: 2.0% versus 2.1% for ticagrelor patients with and without CHF history respectively; and 3.8% versus 1.4% with clopidogrel. There were no adverse clinical consequences associated with this imbalance (including pacemaker insertions) in this population of patients.

PLATO genetic substudy

In PLATO, 10,285 patients provided genetic samples for genotype determination of CYP2C19 and ABCB1 loci. An analysis provided these associations of genotype groupings on efficacy and safety outcomes in PLATO. The superiority of ticagrelor over clopidogrel in reducing major CV events was not significantly affected by patient CYP2C19 or ABCB1 genotype. Similar to the overall PLATO study, Total Major Bleeding did not differ between ticagrelor and clopidogrel, regardless of CYP2C19 or ABCB1 genotype. Non-CABG PLATO Major bleeding was increased with ticagrelor compared clopidogrel in patients with one or more CYP2C19 LOF allele but was similar to clopidogrel in patients with no loss of function allele.

Combined efficacy and safety composite

A combined efficacy and safety composite (CV death, MI, stroke, or PLATO-defined 'Total Major' bleeding) supports the clinical benefit of ticagrelor compared to clopidogrel (RRR 8%, ARR 1.4%, HR 0.92; $p=0.0257$) over 12 months after ACS events.

5.2 PHARMACOKINETIC PROPERTIES

Ticagrelor demonstrates linear pharmacokinetics and exposure to ticagrelor and the active metabolite (AR-C124910XX) are approximately dose proportional up to 1260 mg.

Absorption

Absorption of ticagrelor is rapid with a median t_{max} of approximately 1.5 hours. The formation of the major circulating metabolite AR-C124910XX (also active) from ticagrelor is rapid with a median t_{max} of approximately 2.5 hours. Following oral administration of ticagrelor 90 mg under fasted conditions, C_{max} is 529 ng/ml and AUC is 3451 ng*h/ml. The metabolite parent ratios are 0.28 for C_{max} and 0.42 for AUC.

The mean absolute bioavailability of ticagrelor was estimated to be 36% (range 25.4% to 64.0%). Ingestion of a high-fat meal resulted in a 21% increase in ticagrelor AUC and 22% decrease in the active metabolite C_{max} but had no effect on ticagrelor C_{max} or the AUC of the active metabolite. These small changes are considered of minimal clinical significance; therefore, ticagrelor can be given with or without food.

Ticagrelor as crushed tablets mixed in water, given orally or administered through a nasogastric tube into the stomach, is bioequivalent to whole tablets (AUC and C_{max} within 80-125% for ticagrelor and the active metabolite). Initial exposure (0.5 and 1 hour post-dose) from crushed ticagrelor tablets mixed in water was higher compared to whole tablets, with a generally identical concentration profile thereafter (2 to 48 hours).

Distribution

The steady state volume of distribution of ticagrelor is 87.5 L. Ticagrelor and the active metabolite is extensively bound to human plasma protein (>99.0%).

Metabolism

CYP3A is the major enzyme responsible for ticagrelor metabolism and the formation of the active metabolite and their interactions with other CYP3A substrates ranges from activation through to inhibition. Ticagrelor and the active metabolite are weak P-glycoprotein inhibitors. Ticagrelor is a BCRP inhibitor.

The major metabolite of ticagrelor is AR-C124910XX, which is also active as assessed by in vitro binding to the platelet P2Y₁₂ ADP-receptor. The systemic exposure to the active metabolite is approximately 30-40% of that obtained for ticagrelor.

Excretion

The primary route of ticagrelor elimination is via hepatic metabolism. When radiolabeled ticagrelor is administered, the mean recovery of radioactivity is approximately 84% (57.8% in faeces, 26.5% in urine). Recoveries of ticagrelor and the active metabolite in urine were both less than 1% of the dose. The primary route of elimination for the active metabolite is mostly via biliary secretion. The mean t_{1/2} was approximately 6.9 hours (range 4.5-12.8 hours) for ticagrelor and 8.6 hours (range 6.5-12.8 hours) for the active metabolite.

Special populations

Elderly

Higher exposures to ticagrelor (approximately 60% for both C_{max} and AUC) and the active metabolite (approximately 50% for both C_{max} and AUC) were observed in elderly (≥ 65 years) subjects compared to younger subjects. These differences are not considered clinically significant (see section 4.2).

Paediatric

Ticagrelor is not indicated in a paediatric population (see section 4.2 and 5.1).

Gender

Higher exposures to ticagrelor (approximately 52% and 37% for C_{max} and AUC, respectively) and the active metabolite (approximately 50% for both C_{max} and AUC) were observed in women compared to men. These differences are not considered clinically significant.

Renal impairment

Exposure to ticagrelor was approximately 20% lower and exposure to the active metabolite was approximately 17% higher in patients with severe renal impairment compared to subjects with normal renal function. The IPA effect of ticagrelor was similar between the two groups, however there was more variability observed in individual response in patients with severe renal impairment.

In patients with end stage renal disease on haemodialysis AUC and C_{max} of ticagrelor 90 mg administered on a day without dialysis were 38% and 51% higher respectively compared to subjects with normal renal function. A similar increase in exposure was observed when ticagrelor was administered immediately prior to dialysis showing that ticagrelor is not dialysable. Exposure of the active metabolite increased to a lesser extent. The IPA effect of ticagrelor was independent of dialysis in patients with end stage renal disease and similar to subjects with normal renal function.

No dosing adjustment is needed in patients with renal impairment.

Hepatic impairment

C_{max} and AUC for ticagrelor were 12% and 23% higher in patients with mild hepatic

impairment compared to matched healthy subjects, respectively, however the IPA effect of ticagrelor was similar between the two groups. Ticagrelor has not been studied in patients with severe hepatic impairment and there is no pharmacokinetic information in patients with moderate hepatic impairment (see section 4.2, 4.3 and 4.4).

Ethnicity

Patients of Asian descent have a 39% higher mean bioavailability compared to Caucasian patients. Patients self-identified as Black had an 18% lower bioavailability of ticagrelor compared to Caucasian patients. In clinical pharmacology studies, the exposure (C_{max} and AUC) to ticagrelor in Japanese subjects was approximately 40% (20% after adjusting for body weight) higher compared to that in Caucasians. The exposure in patients self-identified as Hispanic or Latino was similar to that in Caucasians.

5.3 PRECLINICAL SAFETY DATA

Preclinical data for ticagrelor and its major metabolite have not demonstrated unacceptable risk for adverse effects for humans based on conventional studies of safety pharmacology, single and repeated dose toxicity and genotoxic potential.

Adverse reactions not observed in clinical studies, but seen in animals at exposure levels similar or above to clinical exposure levels and with possible relevance to clinical use were as follows: GI toxicity and gastrointestinal irritation.

No compound-related tumours were observed in a 2-year mouse study at oral doses up to 250 mg/kg/day (>18-fold the maximum human therapeutic exposure). There was no increase in tumours in male rats at oral doses up to 120 mg/kg/day (>15-fold the maximum human therapeutic exposure). There was an increase in uterine adenocarcinomas and hepatocellular adenomas plus adenocarcinomas and a decrease in pituitary adenomas and mammary fibroadenomas in female rats only exposed to high doses (>25-fold the maximum human therapeutic exposures). No change in tumour incidence was observed at 60 mg/kg/day (8-fold difference to the maximum human therapeutic exposure). The uterine tumours seen only in rats were found to be the result of a non-genotoxic endocrine effect of hormonal imbalance present in rats given high doses of ticagrelor. The benign liver tumours are considered secondary to the response by the liver to the metabolic load placed on the liver from the high doses of ticagrelor.

Ticagrelor has been tested in a range of in vitro and in vivo tests, and was not shown to be genotoxic.

Ticagrelor was found to have no effect on fertility of female rats at oral doses up to 200 mg/kg/day (approximately 20 times the maximum human therapeutic exposure) and had no effect on fertility of male rats at doses up to 180 mg/kg/day (15.7 times the maximum human therapeutic exposure).

Ticagrelor had no effect on foetal development at oral doses up to 100 mg/kg/day in rats (5.1 times the maximum human therapeutic exposure) and up to 42 mg/kg/day in rabbits (equivalent to the maximum human therapeutic exposure). Ticagrelor had no effects on parturition or postnatal development in rats at doses up to 60 mg/kg/day (4.6 times the maximum human therapeutic exposure).

6. PHARMACEUTICAL PARTICULARS

6.1 LIST OF EXCIPIENTS

90 mg film coated tablet

- Mannitol
- Calcium hydrogen phosphate dihydrate
- Croscarmellose sodium
- Hyprollose
- Magnesium stearate
- Opadry complete film coating system 02B520003 yellow (111369)

6.2 INCOMPATIBILITIES

Incompatibilities were either not assessed or not identified as part of the registration of this medicine.

6.3 SHELF LIFE

24 months.

6.4 SPECIAL PRECAUTIONS FOR STORAGE

Store below 25°C.

6.5 NATURE AND CONTENTS OF CONTAINER

PVC-PVdC/Alu calendar blister (with sun/moon symbols) in cartons of 14 (1x14 tablets sample pack), 28 (2x14 tablets), 56 (4x14 tablets).

6.6 SPECIAL PRECAUTIONS FOR DISPOSAL

Return unused and expired medicines to your local pharmacy for disposal.

7 MEDICINE SCHEDULE

Prescription only Medicine.

8. SPONSOR

Pharmacor Limited
c/- Wynn Williams
Level 25, Vero Centre
48 Shortland Street
Auckland Central
AUCKLAND 1010
New Zealand
Ph: +64 800 172 553 or 0800 172 553

9. DATE OF FIRST APPROVAL

22/12/2025

10. DATE OF REVISION OF THE TEXT

DD/MM/YY

SUMMARY TABLE OF CHANGES

Section changed	Summary of new information