

NEW ZEALAND DATA SHEET

1 ADSINE (6mg/2mL, solution for injection)

ADSINE 6mg/2mL solution for injection.

2 QUALITATIVE AND QUANTITATIVE COMPOSITION

Active ingredient

ADSINE solution for injection contains 6mg/2mL adenosine (equivalent to 3mg/mL).

For the full list of excipients see section 6.1.

3 PHARMACEUTICAL FORM

Solution for injection.

Clear, colourless to almost colourless solution essentially free from visible particles.

4 CLINICAL PARTICULARS

4.1 Therapeutic indications

Rapid conversion to a normal sinus rhythm of paroxysmal supraventricular tachycardias, including those associated with accessory bypass tracts (Wolff - Parkinson - White syndrome).

Diagnostic indications

Aid to diagnosis of broad or narrow QRS complex supraventricular tachycardias. Although **ADSINE** 6mg/2mL is not effective in converting atrial flutter, atrial fibrillation or ventricular tachycardia to sinus rhythm, the slowing of AV conduction helps diagnosis of atrial activity.

Sensitisation of intra-cavitary electrophysiological investigations.

4.2 Dose and method of administration

ADSINE 6mg/2mL should be used only in hospitals, with monitoring and cardiorespiratory resuscitation equipment available for immediate use if necessary. It should be administered by rapid IV bolus injection according to the ascending dosage schedule below. To be certain the solution reaches the systemic circulation, it should be administered either directly into a vein or into an IV line. If administered via an IV line it should be injected as proximally as possible, and followed by a rapid saline flush.

ADSINE 6mg/2mL should only be used when facilities exist for cardiac monitoring. Patients who develop high - level AV block at a particular dose should not be given further dosage increments.

Therapeutic dose

Adults

Initial dose: 3mg given as a rapid intravenous bolus (over 2 seconds).

Second dose: If the first dose does not result in the elimination of supraventricular tachycardia within 1 or 2 minutes, 6mg should be given also as a rapid intravenous bolus.

Third dose: If the second dose does not result in the elimination of supraventricular tachycardia within 1 or 2 minutes, 12mg should be given also as a rapid intravenous bolus.

Children

No controlled paediatric studies have been undertaken. The level of evidence does not allow a recommended posology.

Elderly

See dosage recommendations for adults.

Diagnostic dose

The above ascending dosage schedule should be employed until sufficient diagnostic information has been obtained.

NEW ZEALAND DATA SHEET

Method of administration

Rapid intravenous injection only (see section 4.4).

4.3 Contraindications

ADSINE 6mg/2mL is contraindicated in patients with:

- Known hypersensitivity to adenosine or to any of the excipients (see section 6.1)
- Sick sinus syndrome, second or third degree AV block (except in patients with a functioning artificial pacemaker)
- Chronic obstructive lung disease (such as asthma)
- Long QT syndrome
- Severe hypotension,
- Decompensated states of heart failure.

4.4 Special warnings and precautions for use

Adenosine is intended for use by physicians familiar with the product (see section 4.2) in a hospital setting with monitoring and cardio - respiratory resuscitation equipment available for immediate use if necessary.

The occurrence of angina, severe bradycardia, severe hypotension, respiratory failure (potentially fatal), or asystole/cardiac arrest (potentially fatal), should lead to immediate discontinuation of administration.

In patients with history of convulsions/seizures, the administration of adenosine should be carefully monitored.

As dipyridamole is a known inhibitor of adenosine uptake, it may potentiate the action of adenosine administration. The use of **ADENOSINE BAXTER** 30mg/10mL is contraindicated in patients receiving dipyridamole (see **ADENOSINE BAXTER** 30mg/10mL datasheet section 4.3). If use of adenosine bolus injection (**ADSINE** 6mg/2mL) is judged to be essential, dipyridamole should be discontinued 24 hours beforehand, or the dose of adenosine should be significantly reduced.

ADSINE 6mg/2mL (adenosine) should be given as a rapid intravenous bolus. Adenosine is ineffective in the management of SVT when given as an infusion, rather than a bolus. This is most probably due to the different effect on sinus rate and atrioventricular nodal conduction.

Hypotension

Because it has the potential to cause significant hypotension, adenosine should be used with caution in patients with left main coronary stenosis, uncorrected hypovolaemia, stenotic valvular heart disease, left to right shunt, pericarditis or pericardial effusion, autonomic dysfunction or stenotic carotid artery disease with cerebrovascular insufficiency.

Atrial fibrillation

ADSINE 6mg/2mL should be used with caution in patients with atrial fibrillation or flutter and especially in those with an accessory by - pass tract since particularly the latter may develop increased conduction down the anomalous pathway.

Bradycardia

Some cases of severe bradycardia have been reported. Some occurred in early post heart transplant patients; in other cases occult sino - atrial disease was present. The occurrence of severe bradycardia should be taken as a warning of underlying disease and could potentially favour the occurrence of torsades de pointes.

Heart block and myocardial infarction

ADSINE 6mg/2mL (adenosine) exerts its effect by decreasing conduction through the AV node and may produce a short lasting first, second or third - degree heart block. In extreme cases, transient asystole may result (one case has been reported in a patient with atrial flutter who was receiving carbamazepine). Appropriate therapy should be instituted as needed. Patients who develop high level block on one dose of **ADSINE** 6mg/2mL should not be given additional doses. Because of the very short half - life of adenosine, these effects are generally self - limiting.

NEW ZEALAND DATA SHEET

ADSINE 6mg/2mL should be used with caution in patients with recent myocardial infarction, heart failure, or in patients with minor conduction defects (first degree AV block, bundle branch block) that could be transiently aggravated during infusion.

Arrhythmias at time of conversion

At the time of conversion to normal sinus rhythm, a variety of new rhythms may appear on the electrocardiogram. They generally last only a few seconds without intervention and may take the form of premature ventricular contractions, premature atrial contractions, atrial fibrillation, sinus bradycardia, sinus tachycardia, skipped beats, sinus pause and varying degrees of AV nodal block. Such findings were seen in 55% of patients. The induced bradycardia predisposes the patient to ventricular excitability disorders including ventricular fibrillation and torsades de pointes.

Because of the possible risk of torsades de pointes, **ADSINE** 6mg/2mL should be used with caution in patients with a prolonged QT interval.

Post heart transplantation

In patients with recent heart transplantation (less than 1 year) an increased sensitivity of the heart to adenosine has been observed. **ADSINE** 6mg/2mL should be used with caution in such cases.

Bronchoconstriction

Adenosine administered by inhalation has been reported to cause bronchoconstriction in asthmatic patients, presumably due to mast cell degranulation and histamine release. These effects have not been observed in normal subjects. Adenosine has been administered to a limited number of patients with asthma and mild to moderate exacerbation of their symptoms has been reported. **ADSINE** 6mg/2mL should not be used in patients with asthma (see section 4.3).

Respiratory compromise has occurred during adenosine infusion in patients with obstructive pulmonary disease. **ADSINE** 6mg/2mL should be used with caution in patients with obstructive lung disease not associated with bronchoconstriction (e.g. emphysema, bronchitis, etc) and should be avoided in patients with bronchoconstriction or bronchospasm (e.g. asthma). **ADSINE** 6mg/2mL should be discontinued in any patient who develops severe respiratory difficulties.

Adenosine may precipitate or aggravate bronchospasm.

Paediatric Use

ADSINE 6mg/2mL may trigger atrial arrhythmias and thus might lead to ventricular acceleration in children with Wolff-Parkinson-White (WPW) syndrome. Also see section 5.1.

The efficacy of intraosseous administration has not been established.

4.5 Interaction with other medicines and other forms of interaction

Intravenous **ADSINE** 6mg/2mL (adenosine) has been effectively administered in the presence of other cardioactive drugs, such as digitalis, quinidine, beta - adrenergic blocking agents, calcium channel blocking agents, and angiotensin - converting enzyme inhibitors, without any change in the adverse reaction profile.

Adenosine may interact with drugs that tend to impair cardiac conduction.

Aminophylline, theophylline and other xanthines are competitive adenosine antagonists and should be avoided for 24 hours prior to the administration of adenosine.

Food and drinks containing xanthines (e.g. tea, coffee, chocolate and cola) should be avoided for at least 12 hours prior to the administration of adenosine.

Nucleoside transport inhibitors such as dipyridamole inhibit adenosine cellular uptake and metabolism, and potentiate the action of adenosine. In one study dipyridamole was shown to produce a four - fold increase in adenosine activity. The use of **ADENOSINE BAXTER** 30mg/10mL infusion is contraindicated in patients receiving dipyridamole (see **ADENOSINE BAXTER** 30mg/10mL datasheet section 4.3). If the use of adenosine

NEW ZEALAND DATA SHEET

bolus injection (**ADSINE** 6mg/2mL) is judged to be essential, dipyridamole should be discontinued 24 hours beforehand, or the dose of **ADSINE** 6mg/2mL should be significantly reduced.

Carbamazepine has been reported to increase the degree of heart block produced by other agents. As the primary effect of adenosine is to decrease conduction through the AV node, higher degrees of heart block may be produced in the presence of carbamazepine.

4.6 Fertility, pregnancy and lactation

Use in pregnancy (Category B2)

Animal reproductive studies have not been conducted with adenosine, nor have studies been performed on pregnant women. In the absence of evidence that adenosine does not cause foetal harm, **ADSINE** 6mg/2mL should not be used during pregnancy unless the physician considers the benefits outweigh the potential risks.

Breast-feeding

Studies have not been performed in lactating animals or women. Therefore, adenosine should not be used during lactation. If adenosine treatment is considered essential by the physician, another form of infant feeding should be considered.

4.7 Effects on ability to drive and use machines

Not applicable.

4.8 Undesirable effects

The following adverse reactions have been reported with adenosine rapid intravenous bolus injection. These adverse reactions have been classified using standard terminology and are categorised by body system. They are listed in order of decreasing frequency according to the following definitions:

<i>Very common:</i>	≥ 1/10 (10%)
<i>Common:</i>	≥ 1/100 (1%) and < 1/10 (10%)
<i>Uncommon:</i>	≥ 1/1000 (0.1%) and < 1/100 (1%)
<i>Rare:</i>	≥ 1/10000 (0.01%) and < 1/1000 (0.1%)
<i>Very rare:</i>	< 1/10000 (0.01%)
<i>Not known:</i>	(cannot be estimated from available data).

Cardiovascular System

Very common: bradycardia; sinus pause, skipped beats; atrial extrasystoles; A - V block; ventricular excitability disorders such as ventricular extrasystoles, non - sustained ventricular tachycardia.

Uncommon: sinus tachycardia; palpitations.

Very rare: atrial fibrillation; ventricular excitability including ventricular fibrillation and torsade de pointes; severe bradycardia not corrected by atropine and possibly requiring temporary pacing.

Not known: asystole/cardiac arrest, sometimes fatal especially in patients with underlying ischaemic heart disease/cardiac disorder; MI/ST segment elevation especially in patients with pre-existing severe CAD; cerebrovascular accident/transient ischaemic attack, secondary to the hemodynamic effects of adenosine including hypotension; arteriospasm coronary which may lead to myocardial infarction; hypotension sometimes severe.

Respiratory System

Very common: dyspnoea (or the urge to breathe deeply).

Uncommon: hyperventilation.

Very rare: bronchospasm

Not known: respiratory failure; apnoea/respiratory arrest.

Central Nervous System

Common: headache; dizziness, light - headedness.

Uncommon: head pressure.

Very rare: transient and spontaneously rapidly reversible worsening of intracranial hypertension.

Not known: loss of consciousness/syncope; convulsions, especially in predisposed patients.

NEW ZEALAND DATA SHEET

Gastrointestinal System

Common: nausea.

Uncommon: metallic taste.

Not known: vomiting.

Other

Very common: flushing; chest pressure/pain, feeling of thoracic constriction/oppression.

Common: apprehension; burning sensation.

Uncommon: blurred vision; sweating; feeling of general discomfort/weakness/pain.

Very rare: injection site reactions.

Not known: anaphylactic reaction (including angioedema and skin reactions such as urticaria and rash).

Post-marketing experience

In post-market clinical experience with **ADSINE**, hypotension, sometimes severe, has been reported. There have been reports of cerebrovascular accident/transient ischaemic attack, secondary to the hemodynamic effects of adenosine, including hypotension.

Cases of asystole/cardiac arrest, sometimes fatal especially in patients with underlying ischaemic heart disease/cardiac disorder have been reported (see section 4.4).

Loss of consciousness/syncope, and convulsions especially in predisposed patients have been reported (see section 4.4).

Apnoea/respiratory arrest, and respiratory failure (see section 4.4) have been reported. Cases of fatal outcome of respiratory failure, of bronchospasm, and of apnoea/respiratory arrest have also been reported.

Cases of vomiting have been reported.

Other reports include tingling in arms, numbness, pressure in groin and transient increase in blood pressure.

Myocardial infarction and ST segment elevation have been reported, especially in patients with pre - existing severe coronary artery disease.

Anaphylactic reactions, including angioedema and skin reactions such as urticaria and rash, have been reported.

Reporting of suspected adverse reactions

Reporting suspected adverse reactions after authorisation of the medicine is important. It allows continuing monitoring of the benefit/risk balance of the medicine. Healthcare professionals are asked to report any suspected adverse reactions <https://nzphv.otago.ac.nz/reporting/>

4.9 Overdose

As the half - life of adenosine is very short (less than 10 seconds), adverse effects are generally rapidly self - limiting. Treatment of any prolonged adverse effects should be individualised and be directed toward the specific symptoms. Methylxanthines, such as caffeine and theophylline, and aminophylline are competitive antagonists of adenosine. Intravenous aminophylline or theophylline may be needed.

For advice on the management of overdose please contact the National Poisons Centre on phone number: 0800 764 766 [0800 POISON] in New Zealand (or 131126 in Australia).

5 PHARMACOLOGICAL PROPERTIES

5.1 Pharmacodynamic properties

Pharmacotherapeutic group

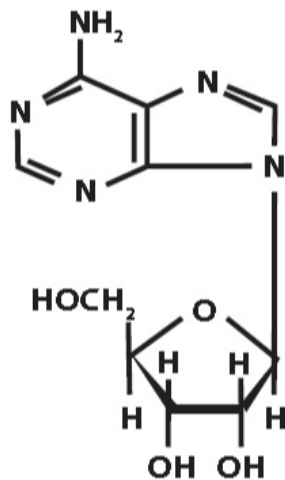
Other cardiac preparations.

ATC Code

C01EB10.

Description

Adenosine is designated chemically as 6-amino-9-β-D-ribofuranosyl-9-H-purine and has the following chemical structure:



Adenosine is a white crystalline powder slightly soluble in water with a molecular weight of 267.2 and an empirical formula of $C_{10}H_{13}N_5O_4$.

ADSINE is a sterile solution for intravenous injection (rapid bolus), provided in clear glass vials. Each vial contains 6mg of adenosine in 2mL of 0.9% v/w sodium chloride in sterile water for injections.

Mechanism of action

ADSINE 6mg/2mL administered by rapid intravenous injections depresses conduction through the AV node.

This action can interrupt re-entry circuits involving the AV node and restore normal sinus rhythm in patients with paroxysmal supraventricular tachycardias and paroxysmal supraventricular tachycardias associated with Wolff - Parkinson - White Syndrome. Once the circuit has been interrupted, the tachycardia stops and normal sinus rhythm is re-established.

By transiently slowing AV conduction, atrial activity is easier to evaluate from ECG recordings and therefore

ADSINE can aid the diagnosis of broad or narrow QRS complex tachycardias.

ADSINE may be useful during electrophysiological studies to determine the site of AV block or to determine, in some cases of pre-excitation, whether conduction is occurring by an accessory pathway or via the AV node.

Haemodynamics

The usual intravenous bolus dose of 3 or 6mg **ADSINE** usually has no systemic haemodynamic effects. Rarely significant hypotension and tachycardia have been observed. When larger doses are given by infusion, adenosine decreases blood pressure by decreasing peripheral resistance.

5.2 Pharmacokinetic properties

Intravenously administered **ADSINE** (adenosine) is removed from the circulation very rapidly. Following an intravenous bolus, adenosine is taken up by erythrocytes and vascular endothelial cells. The half-life of intravenous adenosine is estimated to be less than 10 seconds. Adenosine enters the body pool and is primarily metabolised to inosine and adenosine monophosphate (AMP).

Hepatic and Renal Failure

Hepatic and renal failure should have no effect on the activity of a bolus **ADSINE** (adenosine) injection. Since **ADSINE** (adenosine) has a direct action, hepatic and renal function are not required for the activity or metabolism of a bolus adenosine injection.

NEW ZEALAND DATA SHEET

5.3 Preclinical safety data

Carcinogenicity/Mutagenicity

Studies in animals have not been performed to evaluate the carcinogenic potential of **ADSINE** 6mg/2mL. Adenosine tested negative for mutation in the Salmonella/Mammalian Microsome Assay. Adenosine, like other nucleosides at millimolar concentrations present for several doubling times of cells in culture, is known to produce a variety of chromosomal alterations. In rats and mice, adenosine administered intraperitoneally once a day for 5 days at 50, 100 and 150mg/kg caused decreased spermatogenesis and increased numbers of abnormal sperm.

6 PHARMACEUTICAL PARTICULARS

6.1 List of excipients

Sodium chloride	9mg/mL
Water for injections	q.s. to 2mL
Nitrogen	q.s.

6.2 Incompatibilities

In the absence of compatibility studies, this medicinal product must not be mixed with other medicinal products.

6.3 Shelf life

Unopened: 24 months.

The product should be used immediately after opening.

6.4 Special precautions for storage

Store below 30°C. Do not refrigerate.

6.5 Nature and contents of container

Glass type I clear vials (2mL) sealed with chlorobutyl rubber closures.

Packs of 5, 10 or 25 vials packed in a tray in a cardboard carton.

6.6 Special precautions for disposal and other handling

Any portion of the vial not used at once should be discarded.

7 MEDICINE SCHEDULE

Prescription only medicine.

8 SPONSOR

ADSINE is distributed in New Zealand by:

Baxter Healthcare Ltd
33 Vestey Drive
Mt Wellington
Auckland 1060.

Baxter Healthcare Ltd
PO Box 14 062
Panmure
Auckland 1741

Phone (09) 574 2400.

9 DATE OF FIRST APPROVAL

Date of publication in the New Zealand Gazette of consent to distribute the medicine:

31 August 2017.

10 DATE OF REVISION OF THE TEXT

8 November 2022.

NEW ZEALAND DATA SHEET

SUMMARY TABLE OF CHANGES

Section changed	Summary of new information

Please refer to the Medsafe website (www.medsafe.govt.nz) for most recent data sheet.