
Data Sheet

DBL™ Rocuronium Bromide Injection

NAME OF THE MEDICINE

DBL™ Rocuronium Bromide Injection 50 mg/5 mL Vial

PRESENTATION

Rocuronium bromide is a quaternary aminosteroid and an analogue of vecuronium bromide. It is an off-white to pale-yellow or slightly pink amorphous powder and is chemically designated as 1-[17β-(acetyloxy)-3α-hydroxy-2β-(4-morpholinyl)-5α-androstan-16β-yl]-1-(2propenyl) pyrrolidinium bromide. Its molecular and structural formula is shown above.

Rocuronium bromide is readily soluble in water (> 200 mg/mL) and a 1% w/v solution in water has a pH of 8.9 – 9.5. In aqueous solution rocuronium bromide is more stable at acidic pH.

DBL™ Rocuronium Bromide Injection is supplied as a sterile, nonpyrogenic, isotonic solution that is clear, colourless to faintly yellow, administered by intravenous bolus or infusion. Each mL contains 10 mg rocuronium bromide and the following inactive ingredients sodium acetate, sodium chloride and acetic acid and/or sodium hydroxide q.s. to adjust pH to within the range of 3.8 -4.2.

USES

PHARMACOLOGY

Pharmacotherapeutic group (ATC code)

Muscle relaxants, peripherally acting agents. ATC code: M03AC09.

Pharmacodynamics

Rocuronium bromide is a fast onset, intermediate acting non-depolarising neuromuscular blocking agent, possessing all of the characteristic pharmacological actions of this class of medicines (curariform). It acts by competing for nicotinic cholinceptors at the motor endplate. This action is antagonised by acetylcholinesterase inhibitors such as neostigmine, edrophonium and pyridostigmine.

The ED₉₀ (dose required to produce 90% depression of the twitch response of the thumb to stimulation of the ulnar nerve) during intravenous anaesthesia is approximately 0.3 mg/kg rocuronium bromide. The ED₉₅ in infants is lower than in adults and children (0.25, 0.35 and 0.40 mg/kg, respectively).

The clinical duration (the duration until spontaneous recovery to 25% of control twitch height) with 0.6 mg/kg rocuronium bromide is 30 to 40 minutes. The total duration (time until spontaneous recovery to 90% of control twitch height) is 50 minutes. The mean time of

spontaneous recovery of twitch response from 25 to 75% (recovery index) after a bolus dose of 0.6 mg/kg rocuronium bromide is 14 minutes.

With lower doses of 0.3 to 0.45 mg/kg rocuronium bromide (1 to 1.5 times ED₉₀), onset of action is slower and duration of action is shorter. With high doses of 2 mg/kg, clinical duration is 110 minutes.

Intubation during routine anaesthesia

Within 60 seconds following intravenous administration of a dose of 0.6 mg/kg rocuronium bromide (two times ED₉₀ under intravenous anaesthesia), adequate intubation conditions can be achieved in nearly all patients of which in 80% intubation conditions are rated excellent. General muscle paralysis for any type of procedure is established within two minutes. After administration of 0.45 mg/kg rocuronium bromide, acceptable (intubation) conditions are present after 90 seconds.

Rapid Sequence Induction

During rapid sequence induction of anaesthesia under propofol or fentanyl/ thiopental anaesthesia, adequate intubation conditions are achieved within 60 seconds in 93% and 96% of the patients, respectively, following a dose of 1.0 mg/kg rocuronium bromide. Of these, 70% are rated excellent. The clinical duration with this dose approaches one hour, at which time the neuromuscular block can be safely reversed. Following a dose of 0.6 mg/kg rocuronium bromide, adequate intubation conditions are achieved within 60 seconds in 81% and 75% of the patients during a rapid sequence induction technique with propofol or fentanyl/thiopental, respectively.

Special populations

Mean onset time in infants and children at an intubation dose of 0.6 mg/kg is slightly shorter than in adults. The duration of relaxation and the time to recovery tend to be shorter in children compared to infants and adults.

The duration of action of maintenance doses of 0.15 mg/kg rocuronium bromide might be somewhat longer under enflurane and isoflurane anaesthesia in geriatric patients and in patients with hepatic disease and/or renal disease (approximately 20 minutes) than in patients without impairment of excretory organ functions under intravenous anaesthesia (approximately 13 minutes). No accumulation of effect (progressive increase in duration of action) with repetitive maintenance dosing at the recommended level has been observed.

Intensive Care Unit

Following continuous infusion in the Intensive Care Unit (ICU), the time to recovery of the train of four (TOF) ratio to 0.7 depends on the level of block at the end of the infusion. After a continuous infusion for 20 hours or more the median (range) time between return of T₂ to train of four stimulation and recovery of the train of four ratio to 0.7 approximates 1.5 (one to five) hours in patients without multiple organ failure and four (1 to 25) hours in patients with multiple organ failure.

Cardiovascular surgery

In patients scheduled for cardiovascular surgery the most common cardiovascular changes during the onset of maximum block following 0.6 to 0.9 mg/kg rocuronium bromide are a slight and clinically insignificant increase in heart rate up to 9% and an increase in mean arterial blood pressure up to 16% from the control values.

Reversal of muscle relaxation.

The action of rocuronium can be antagonized either by sugammadex or by acetylcholinesterase inhibitors (neostigmine, pyridostigmine or edrophonium). Sugammadex can be given for routine reversal (at 1-2 post-tetanic counts to reappearance of T₂) or immediate reversal (3 minutes after rocuronium bromide administration). Acetylcholinesterase inhibitors can be administered at reappearance of T₂ or at the first signs of clinical recovery.

Pharmacokinetics

After intravenous administration of a single bolus dose of rocuronium bromide the plasma concentration time course runs in three exponential phases. In normal adults, the mean (95%CI) elimination half-life is 73 (66 - 80) minutes, the (apparent) volume of distribution at steady state conditions is 203 (193 – 214) mL/kg and plasma clearance is 3.7 (3.5 – 3.9) mL/kg/min.

In controlled studies the plasma clearance in geriatric patients and in patients with renal dysfunction was reduced, in most studies, however, without reaching the level of statistical significance. In patients with hepatic disease, the mean elimination half-life is prolonged by 30 minutes and the mean plasma clearance is reduced by 1mL/kg/min. **(See also Dosage and Administration).**

In infants (3 months to 1 year), the apparent volume of distribution at steady state conditions is increased compared to adults and children (1 - 8 years). In older children (3 – 8 years), a trend is seen toward higher clearance and shorter elimination half-life (approximately 20 minutes) compared to adults, younger children and infants.

When administered as a continuous infusion to facilitate mechanical ventilation for 20 hours or more, the mean elimination half-life and the mean (apparent) volume of distribution at steady state are increased. A large between patient variability is found in controlled clinical studies, related to nature and extent of (multiple) organ failure and individual patient characteristics. In patients with multiple organ failure a mean (\pm SD) elimination half-life of 21.5 (\pm 3.3) hours, a (apparent) volume of distribution at steady state of 1.5 (\pm 0.8) L/kg and a plasma clearance of 2.1 (\pm 0.8) mL/kg/min were found.

Rocuronium is excreted in urine and bile. Excretion in urine approaches 40% within 12 – 24 hours. After injection of a radiolabeled dose of rocuronium bromide, excretion of the radiolabel is on average 47% in urine and 43% in faeces after 9 days. Approximately 50% is recovered as the parent compound.

There is no proper animal model to mimic the usually extremely complex clinical situation of the ICU patient. Therefore the safety of DBL™ Rocuronium Bromide Injection when used to facilitate mechanical ventilation in the Intensive Care Unit is mainly based on the results obtained in clinical studies.

INDICATIONS

DBL™ Rocuronium Bromide Injection is indicated to provide skeletal muscle relaxation during surgery.

DBL™ Rocuronium Bromide Injection is also indicated as an adjunct to general anaesthesia to facilitate tracheal intubation during routine induction, and during rapid sequence induction when suxamethonium is contraindicated.

DBL™ Rocuronium Bromide Injection is also indicated as an adjunct in the Intensive Care Unit (ICU) to facilitate intubation and mechanical ventilation.

CONTRAINDICATIONS

Known hypersensitivity to rocuronium or the bromide ion or to any of the excipients.

WARNINGS AND PRECAUTIONS

Since rocuronium bromide causes paralysis of the respiratory muscles, ventilatory support is mandatory for patients treated with this agent until adequate spontaneous respiration is restored. As with all neuromuscular blocking agents, it is important to anticipate intubation difficulties, particularly when used as part of a rapid sequence induction technique.

In case of intubation difficulties resulting in a clinical need for immediate reversal of a rocuronium induced neuromuscular block, the use of sugammadex should be considered.

As with other neuromuscular blocking agents, residual curarization has been reported for rocuronium bromide. In order to prevent complications resulting from residual curarization, it is recommended to extubate only after the patient has recovered sufficiently from neuromuscular block. Other factors which could cause residual curarization after extubation in the post-operative phase (such as drug interactions or patient condition) should also be considered. If not used as part of standard clinical practice, the use of sugammadex or another reversal agent should be considered, especially in those cases where residual curarization is more likely to occur.

Anaphylactic reactions can occur following administration of neuromuscular blocking agents. Precautions for treating such reactions should always be taken. Particularly in the case of previous anaphylactic reactions to neuromuscular blocking agents, special precautions should be taken since allergic cross-reactivity to neuromuscular blocking agents has been reported.

In general, following long term use of neuromuscular blocking agents in the ICU, prolonged paralysis and/or skeletal muscle weakness has been noted. In order to help preclude possible prolongation of neuromuscular block and/or overdosage it is strongly recommended that neuromuscular transmission is monitored throughout the use of muscle relaxants. In addition, patients should receive adequate analgesia and sedation. Furthermore, neuromuscular blocking agents should be titrated to effect in individual patients by or under supervision of experienced clinicians who are familiar with their actions and with appropriate neuromuscular monitoring techniques.

Myopathy after long term administration of other non-depolarizing neuromuscular blocking agents in the ICU in combination with corticosteroid therapy has been reported regularly. Therefore, for patients receiving both neuromuscular blocking agents and corticosteroids, the period of use of the neuromuscular blocking agent should be limited as much as possible.

If suxamethonium is used for intubation, the administration of DBL™ Rocuronium Bromide Injection should be delayed until the patient has clinically recovered from the neuromuscular block induced by suxamethonium.

The following conditions may influence the pharmacokinetics and/or pharmacodynamics of rocuronium bromide:

Hepatic and/or biliary tract disease and renal failure

Because rocuronium is excreted in urine and bile, it should be used with caution in patients with clinically significant hepatic and/or biliary diseases and/or renal failure. In these patient

groups prolongation of action has been observed with doses of 0.6mg rocuronium bromide per kg body weight.

Prolonged Circulation Time

Conditions associated with prolonged circulation time such as cardiovascular disease, old age and oedematous state resulting in an increased volume of distribution may contribute to a slower onset of action. The duration of action may also be prolonged due to a reduced plasma clearance.

Neuromuscular Disease

Like other neuromuscular blocking agents, rocuronium bromide should be used with extreme caution in patients with a neuromuscular disease or after poliomyelitis since the response to neuromuscular blocking agents may be considerably altered in these cases. The magnitude and direction of this alteration may vary widely. In patients with myasthenia gravis or with the myasthenic (Eaton-Lambert) syndrome, small doses of rocuronium bromide may have profound effects and rocuronium bromide should be titrated to the response.

Hypothermia

In surgery under hypothermic conditions, the neuromuscular blocking effect of rocuronium bromide is increased and the duration prolonged.

Obesity

Like other neuromuscular blocking agents, rocuronium bromide may exhibit a prolonged duration and a prolonged spontaneous recovery in obese patients, when the administered doses are calculated on actual body weight.

Burns

Patients with burns are known to develop resistance to non-depolarising neuromuscular blocking agents. It is recommended that the dose is titrated to response.

Conditions which may increase the effects of DBL™ Rocuronium Bromide Injection

Hypokalaemia (e.g. after severe vomiting, diarrhoea and diuretic therapy), hypocalcaemia (after massive transfusion), hypermagnesaemia, hypoproteinaemia, dehydration, acidosis, hypercapnia and cachexia. Severe electrolyte disturbances, altered blood pH or dehydration should therefore be corrected when possible.

Use in pregnancy (Category B2)

For rocuronium bromide, no clinical data on exposed pregnancies are available. Animal studies do not indicate direct or indirect harmful effects with respect to pregnancy, embryonal/foetal development, parturition or postnatal development. Caution should be exercised when prescribing rocuronium bromide to pregnant women.

Caesarian section

In patients undergoing Caesarian section, rocuronium bromide can be used as part of a rapid sequence induction technique, provided no intubation difficulties are anticipated and a sufficient dose of anaesthetic agent is administered or following suxamethonium facilitated intubation. Rocuronium bromide administered in doses of 0.6mg/kg, has been shown to be safe in parturients undergoing Caesarian section. Rocuronium bromide does not affect Apgar score, foetal muscle tone nor cardiorespiratory adaptation. From umbilical cord blood sampling it is apparent that only limited placental transfer of rocuronium bromide occurs which does not lead the observation of clinical adverse affects in the newborn.

Note 1: Doses of 1.0mg/kg have been investigated during rapid sequence induction of anaesthesia, but not in Caesarian section patients. Therefore, only a dose of 0.6mg/kg is recommended in this patient group.

Note 2: Reversal of neuromuscular block induced by neuromuscular blocking agents may be inhibited or unsatisfactory in patients receiving magnesium salts for toxemia of pregnancy because magnesium salts enhance neuromuscular blockade. Therefore, in these patients the dosage of Rocuronium bromide should be reduced and be titrated to twitch response.

Australian categorisation definition of Category B2:

Drugs that have been taken by only a limited number of pregnant women and women of childbearing age, without an increase in the frequency of malformation or other direct or indirect harmful effects on the human foetus having been observed. Studies in animals[1] are inadequate or may be lacking, but available data show no evidence of an increased occurrence of foetal damage.

Use in Lactation

It is unknown whether rocuronium bromide is excreted in human breast milk. Animal studies have shown insignificant levels of rocuronium bromide in breast milk. Animal studies do not indicate direct or indirect harmful effects with respect to pregnancy, embryonal/foetal development, parturition or postnatal development. Rocuronium bromide should be given to lactating women only when the attending physician decides that the benefits outweigh the risks.

Effects on ability to drive and use machinery operate machinery

Since DBL™ Rocuronium Bromide Injection is used as an adjunct to general anaesthesia, the usual precautionary measures after a general anaesthesia should be taken for ambulatory patients.

Interactions with other medicines

The following agents have been shown to influence the magnitude and/or the duration of action of non-depolarising neuromuscular blocking agents:

Effect of other drugs on DBL™ Rocuronium Bromide Injection

Increased Effect

- Halogenated volatile anaesthetics potentiate the neuromuscular block of DBL™ Rocuronium Bromide Injection. The effect only becomes apparent with maintenance dosing (**See Dosage and Administration**). Reversal of the block with anticholinesterase inhibitors could also be inhibited.
- After intubation with suxamethonium (**See Dosage and Administration**)
- Long term concomitant use of corticosteroids and DBL™ Rocuronium Bromide Injection in the ICU may result in prolonged duration of neuromuscular block or myopathy (**See Warnings and Precautions and Adverse Effects**)

Other Drugs

- Antibiotics: aminoglycoside, lincosamide and polypeptide antibiotics, acylamino-penicillin antibiotics
- Diuretics, quinidine and its isomer quinine, magnesium salts, calcium channel blocking agents, lithium salts, local anaesthetics (lignocaine I.V., bupivacaine epidural) and acute administration of phenytoin or β -blocking agents.

Recurarization has been reported after post-operative administration of: aminoglycoside, lincosamide, polypeptide and acylamino-penicillin antibiotics, quinidine, quinine and magnesium salts (**See Warnings and Precautions**)

Decreased Effect

- Prior chronic administration of corticosteroids, phenytoin or carbamazepine
- Protein inhibitors (gabexate, ulinastatin)

Variable Effect

- Administration of other non-depolarising neuromuscular blocking agents in combination with DBL™ Rocuronium Bromide Injection may produce potentiation or attenuation of the neuromuscular block, depending on the order of administration and the neuromuscular blocking agent used
- Suxamethonium given after the administration of rocuronium bromide may produce potentiation or attenuation of the neuromuscular blocking effect of rocuronium bromide.

Effect of DBL™ Rocuronium Bromide Injection on other drugs

DBL™ Rocuronium Bromide Injection combined with lignocaine may result in a quicker onset of lignocaine.

ADVERSE EFFECTS

The most commonly occurring adverse drug reactions include injection site pain/reaction, changes in vital signs and prolonged neuromuscular block. The most frequently reported serious adverse drug reactions during post-marketing surveillance is “anaphylactic and anaphylactoid reactions” and associated symptoms. See also the explanation notes below the table.

MedDRA SOC	Preferred Term ^a	
	Uncommon / Rare ^b (<1/100, >1/10,000)	Very Rare (<1/10,000)
Immune System Disorders		Hypersensitivity Anaphylactic Reaction Anaphylactoid Reaction Anaphylactic Shock Anaphylactoid Shock
Nervous System Disorders		Flaccid Paralysis
Cardiac Disorders	Tachycardia	
Vascular Disorders	Hypotension	Circulatory Collapse and Shock Flushing

Respiratory, Thoracic and Mediastinal Disorders		Bronchospasm
Skin and Subcutaneous Tissue Disorders		Angioneurotic oedema Urticaria Rash Erythematous Rash
Musculoskeletal and Connective Tissue Disorders		Muscular Weakness ^c Steroid Myopathy ^c
General Disorders and Administrative Site Conditions	Drug Ineffective Drug Effect / Therapeutic Response decreased Drug Effect / Therapeutic Response increased Injection Site Pain Injection Site Reaction	Face Oedema
Injury, Poisoning and Procedural Complications	Prolonged Neuromuscular Block Delayed recovery from the Anaesthesia	Airway Complication of Anaesthesia

a = Frequencies are estimates derived from post-marketing surveillance reports and data from the general literature

b = Post-marketing surveillance data cannot give precise incidence figures. For that reason, the reporting frequency was divided over two rather than five categories.

c = After long term use in the ICU

Anaphylaxis

Although very rare, severe anaphylactic reactions to neuromuscular blocking agents, including rocuronium bromide, have been reported. Anaphylactic/anaphylactoid reactions are: bronchospasm, cardiovascular changes (e.g. hypotension, tachycardia, circulatory collapse – shock), and cutaneous changes (e.g. angioedema, urticaria). These reactions have, in some cases, been fatal. Due to the possible severity of these reactions, one should always assume they may occur and take the necessary precautions.

Since neuromuscular blocking agents are known to be capable of inducing histamine release both locally at the site of injection and systematically, the possible occurrence of itching and erythematous reactions at the site of injection and/or generalized histaminoid (anaphylactoid) reactions (see also under anaphylactic reactions above) should always be considered when administering these drugs.

In clinical studies only a slight increase in mean plasma histamine levels has been observed following rapid bolus administration 0.3 – 0.9 mg/kg rocuronium bromide.

Local injection site reactions

During rapid sequence induction of anaesthesia, pain on injection has been reported, especially when the patient has not yet completely lost consciousness and particularly when propofol is used as the induction agent. In clinical studies, pain on injection has been noted in 16% of the patients who underwent rapid sequence induction of anaesthesia with propofol and in less than 0.5% of the patients who underwent rapid sequence induction of anaesthesia with fentanyl and thiopental.

Prolonged neuromuscular block

The most frequent adverse reaction to non-depolarising blocking agents as a class consists of an extension of the drug's pharmacological action beyond the time period needed. This may vary from skeletal muscle weakness to profound and prolonged skeletal muscle paralysis resulting in respiratory insufficiency or apnoea.

Intensive Care Unit myopathy

Myopathy has been reported after the use of various neuromuscular blocking agents in the ICU in combination with corticosteroids (See Precautions).

DOSAGE AND ADMINISTRATION

Like other neuromuscular blocking agents DBL™ Rocuronium Bromide Injection should only be administered by, or under supervision of, experienced clinicians who are familiar with the action and use of these agents.

The dosage of rocuronium bromide should be individualised in each patient. The method of anaesthesia and the expected duration of surgery, the method of sedation and the expected duration of mechanical ventilation, the possible interaction with other medicines that are administered concomitantly, and the condition of the patient should be taken into account when determining the dose. The use of an appropriate neuromuscular monitoring technique is recommended for evaluation of the neuromuscular block and recovery.

Inhalation anaesthetics do potentiate the neuromuscular blocking effects of rocuronium bromide. This potentiation, however, becomes clinically relevant in the course of anaesthesia, when the volatile agents have reached the tissue concentrations required for this interaction. Consequently, adjustments with rocuronium bromide should be made by administering smaller maintenance doses at less frequent intervals or by using lower infusion rates of rocuronium bromide during long lasting procedures (longer than one hour) under inhalation anaesthesia (see **Interactions with Other Medicines**).

In adult patients the following dosage recommendations may serve as a general guideline for tracheal intubation and muscle relaxation for short to long lasting surgical procedures and for use in the intensive care unit.

Surgical Procedures

Tracheal intubation

The standard intubating dose during routine anaesthesia is 0.6 mg rocuronium bromide per kg body weight, after which adequate intubation conditions are established within 60 seconds in

nearly all patients. A dose of 1.0mg rocuronium bromide per kg body weight is recommended for facilitating tracheal intubation conditions are also established within 60 seconds in nearly all patients. If a dose of 0.6mg rocuronium bromide per kg body weight is used for rapid sequence induction of anaesthesia, it is recommended to intubate the patient 90 seconds after administration of rocuronium bromide.

In patients undergoing Caesarian section it is recommended to only use a dose of 0.6mg rocuronium bromide per kg body weight, since 1.0mg/kg has not been investigated in this patient group.

Maintenance dose

The recommended maintenance dose is 0.15 mg rocuronium bromide per kg body weight; in the case of long-term inhalational anaesthesia, this should be reduced to 0.075 to 0.1 mg/kg rocuronium bromide. The maintenance doses should best be given when twitch height has recovered to 25% of control twitch height or when two to three responses to train of four stimulation are present.

Continuous infusion

If rocuronium bromide is administered by continuous infusion, it is recommended to give a loading dose of 0.6mg Rocuronium bromide per kg body weight and, when neuromuscular block starts to recover, to start administration by fusion. The infusion rate should be adjusted to maintain twitch response at 10% of control twitch height, or to maintain 1 to 2 responses to train of four stimulation. In adults under intravenous anaesthesia the infusion rate required to maintain neuromuscular block at this level ranges from 0.3-0.6mg/kg/hr and under inhalation anaesthesia the infusion rate ranges from 0.3-0.4mg/kg/hr. Continuous monitoring of neuromuscular block is recommended since infusion rate requirements vary from patient to patient and with the anaesthetic method used. A reduction in infusion rate may be required in patients with significant renal and/or hepatic disease.

Paediatric patients

Children (1-14 years) and infants (1-12months) under halothane anaesthesia manifest similar sensitivity to rocuronium bromide as adults. Onset of action is faster in infants and children than in adults.

Clinical duration is shorter in children than in adults.

For continuous infusion in paediatrics, the infusion rates, with the exception of children, are the same as for adults. For children higher infusion rates might be necessary. For children the same initial infusion rates as for adults are recommended and this should be adjusted to maintain twitch response at 10% of control twitch height or to maintain 1 or 2 responses to train of four stimulation during the procedure.

There are insufficient data to support dose recommendation for the use of rocuronium bromide in neonates (0-1 month).

The experience with rocuronium bromide in rapid sequence induction in paediatric patients is limited. Rocuronium bromide is therefore not recommended for facilitating tracheal intubation conditions during rapid sequence induction in paediatric patients.

Dosing in geriatric patients and patients with hepatobiliary disease and/or renal failure

The standard intubation dose for geriatric patients and patients with hepatic and/or biliary tract disease and/or renal failure during routine anaesthesia is 0.6 mg/kg rocuronium bromide. A dose of 0.6mg per kg body weight should be considered for rapid sequence induction of anaesthesia in patients in which a prolonged duration of action is expected. Regardless of the anaesthetic technique used, the recommended maintenance dose for these patients is 0.075 to

0.1 mg/kg rocuronium bromide and the recommended infusion rate is 0.3 to 0.4 mg/kg/hour (see also **Continuous infusion**).

Overweight and obese patients

When used in overweight or obese patients (defined as patients with a body weight of 30% or more above ideal body weight) doses should be reduced taking into account ideal bodyweight.

Intensive Care Procedures

Tracheal intubation

For tracheal intubation, the same doses should be used as described above under surgical procedures.

Maintenance dosing

The use of an initial loading dose of 0.6 mg rocuronium bromide per kg body weight is recommended, followed by a continuous infusion as soon as twitch height recovers to 10% or upon reappearance of one to two twitches to train of four stimulation. Dosage should always be titrated to effect in the individual patient. The recommended initial infusion rate for the maintenance of a neuromuscular block of 80 to 90% (one to two twitches to TOF stimulation) in adult patients is 0.3 to 0.6 mg/kg/hour during the first hour of administration, which will need to be decreased during the following 6 to 12 hours, according to the individual response. Thereafter, individual dose requirements remain relatively constant.

A large between patient variability in hourly infusion rates has been found in controlled clinical studies, with mean hourly infusion rates ranging from 0.2 to 0.5 mg/kg/hour depending on nature and extent of organ failure(s), concomitant medication and individual patient characteristics. To provide optimal individual patient control, monitoring of neuromuscular transmission is strongly recommended. Administration up to seven days has been investigated. Rocuronium bromide is not recommended for the facilitation of mechanical ventilation in the intensive care in paediatric and geriatric patients due to a lack of data on safety and efficacy.

Patients with multiple organ failure require lower infusion rates. (See also **Warnings and Precautions**)

Prolonged use (> 48 hours) of non-depolarising muscle relaxants in the ICU should be avoided. (See also **Warnings and Precautions**)

Administration

Rocuronium bromide is administered intravenously either as a bolus injection or as a continuous infusion (see also instructions for use/handling)

Physical compatibilities

Compatibility studies with the following infusion fluids have been performed. In nominal concentrations of 0.5 mg/mL and 2.0 mg/mL rocuronium bromide has been shown to be compatible with 0.9% NaCl, 5% dextrose, 5% dextrose in saline, sterile water for injections, Lactated Ringers and Haemaccel. Administration should be commenced immediately after mixing, and should be completed within 24 hours. Unused solutions should be discarded.

Physical incompatibilities.

Physical incompatibility has been documented when rocuronium bromide is added to solutions containing the following agents: amoxicillin, amphotericin, azathioprine,

cephazolin, cloxacillin, dexamethasone, diazepam, enoxamone, erythromycin, famotidine, frusemide, hydrocortisone sodium succinate, insulin, intralipid, methylprednisolone, prednisolone sodium succinate, thiopentone sodium, trimethoprim and vancomycin hydrochloride.

Rocuronium bromide must not be mixed with other solutions or drugs except those mentioned above (see **Physical compatibilities**).

If rocuronium bromide is administered via the same infusion line that is also used for other medicines, it is important that this infusion line is adequately flushed (e.g. with 0.9% NaCl) between administration of rocuronium bromide and medicines for which incompatibility with rocuronium bromide has been demonstrated or for which compatibility with rocuronium bromide has not been established.

OVERDOSAGE

Treatment

In the event of overdose and prolonged neuromuscular block, the patient should continue to receive ventilatory support and sedation. In this situation there are two options for the reversal of neuromuscular block: (1) Sugammadex can be used for reversal of intense (profound) and deep block. The dose of sugammadex to be administered depends of the level of neuromuscular block. (2) An acetylcholinesterase inhibitor (e.g. neostigmine, edrophonium, pyridostigmine), with appropriate vagolytic (e.g. atropine) can be used at reappearance of T₂ or at the first signs of clinical recovery and should be administered in adequate doses. When administration of an acetylcholinesterase inhibiting agent fails to reverse the effects of rocuronium, ventilation must be continued until spontaneous breathing is restored. Repeated dose of an acetylcholinesterase inhibitor can be dangerous.

In animal studies, severe depression of cardiovascular function, eventually leading to cardiac collapse did not occur until a cumulative dose of 750 x ED₉₀ (135mg mg per kg body weight) was administered.

Use of a reversal agent should not begin until definite signs of spontaneous recovery are present. Overdosage of an acetylcholinesterase inhibitor can be dangerous.

In case of overdose, immediately contact the Poison Information Centre for advice (In Australia, call 13 11 26. In New Zealand, call 0800 764 766).

PHARMACEUTICAL PRECAUTIONS

DBL™ Rocuronium Bromide Injection should be stored at 2°C - 8°C. DBL™ Rocuronium Bromide Injection is intended to be used for one dose and in one patient only. Unused solutions should be discarded. DBL™ Rocuronium Bromide Injection should not be returned to 2°C - 8°C storage after it has been kept outside the refrigerator at 8°C - 30°C (i.e. normal use in the anaesthetic room or operating theatre). The date of removal should be noted on the vial and the product discarded if not used in 12 weeks.

MEDICINE CLASSIFICATION

Prescription Medicine

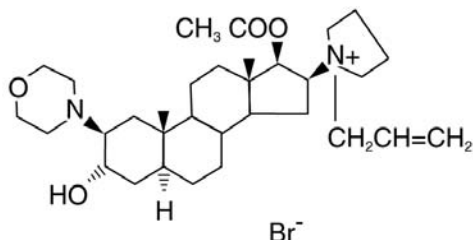
PACKAGING QUANTITIES

Strength
50 mg/5 mL

Pack
10 x 5 mL vial

FURTHER INFORMATION

Structure



Preclinical Safety Data

Effects in non-clinical studies were observed only at exposures considered sufficiently in excess of the maximum human exposure indicating little relevance to clinical use. There is no proper animal model to mimic the usually extremely complex clinical situation of the ICU patient. Therefore the safety of Rocuronium bromide when used to facilitate mechanical ventilation in the Intensive Care Unit is mainly based on the results obtained in clinical studies.

Molecular Formula

C₃₂H₅₃BrN₂O₄

Molecular weight

609.7

CAS Registry No

119302-91-9

NAME AND ADDRESS

Hospira NZ Ltd
23 Haining Street
Te Aro
Wellington
New Zealand

DATE OF PREPARATION

30 September 2010