

# DATA SHEET

## **AVONEX<sup>®</sup> interferon beta-1a (rch) Powder for Injection and Solution for Injection**

### **NAME OF THE MEDICINE**

Interferon beta-1a is a 166 amino acid glycoprotein with a specific activity of approximately 200 million international units (IU) of antiviral activity per mg. It has a predicted molecular weight of approximately 22,500 Daltons and is produced by mammalian (Chinese Hamster Ovary) cells into which the human interferon beta gene has been introduced. The amino acid sequence of AVONEX<sup>®</sup> is identical to that of natural human interferon beta.

### **PRESENTATION**

AVONEX is produced by recombinant DNA technology and is manufactured as a 30 microgram powder or solution for injection.

#### **Powder for Injection**

AVONEX is supplied as a sterile white to off-white lyophilised powder containing interferon beta-1a for intramuscular injection. Each 1 mL of reconstituted AVONEX Powder for Injection contains 30 µg of interferon beta-1a with 6 million IU of antiviral activity. AVONEX Powder for Injection also contains albumin, sodium chloride and sodium phosphate (monobasic and dibasic).

#### **Solution for Injection**

AVONEX is also supplied as a sterile solution for injection containing interferon beta-1a for intramuscular injection. Each 0.5 mL Solution for Injection contains 30 µg of interferon beta-1a with 6 million IU of antiviral activity. AVONEX Solution for Injection also contains sodium acetate, glacial acetic acid, arginine hydrochloride, polysorbate 20 and water for injections.

### **USES**

#### **Actions**

Interferons are a family of naturally occurring proteins and glycoproteins that are produced by eukaryotic cells in response to viral infection and other biological inducers. Interferon beta, one member of this family, is produced by various cell types including fibroblasts and macrophages. Natural interferon beta and interferon beta-1a (rch) are glycosylated, with each containing a single N-linked complex carbohydrate moiety. Glycosylation of other proteins is known to affect their stability, activity, biodistribution and half-life in blood. However, the effects of glycosylation on interferon beta have not been fully defined.

Interferons are cytokines that mediate antiviral, antiproliferative and immunomodulatory activities in response to viral infection and other biological inducers. Three major interferons have been distinguished: alpha, beta and gamma. Interferons alpha and beta form the Type I class of interferons, whilst interferon gamma is a Type II interferon. These interferons have overlapping but clearly distinct biological activities.

Interferon beta-1a exerts its biological effects by binding to specific receptors on the surface of human cells. This binding initiates a complex cascade of intracellular events that lead to the expression of numerous interferon-induced gene products and markers. These include 2'5'-oligoadenylate synthetase,  $\beta_2$ -microglobulin and neopterin. These products have been measured in the serum and cellular fractions of blood collected from patients treated with interferon beta-1a.

The specific interferon-induced proteins and mechanisms by which AVONEX exerts its effects in multiple sclerosis have not been fully defined.

### Pharmacokinetics

In volunteers, serum interferon beta-1a activity levels are only slightly above detectable limits following a 30  $\mu\text{g}$  (6 million IU) intramuscular dose. However, following an intramuscular dose of 75  $\mu\text{g}$  (15 million IU), the area under the curve was 11.21 nanogram (2242 IU) hr/mL in healthy volunteers ( $n = 29$ ). The maximum concentration when 75  $\mu\text{g}$  (15 million IU) was given intramuscularly was 0.4 nanogram (80 IU)/mL 13 hours after the dose. The serum half-life following IM administration is approximately 10 hours.

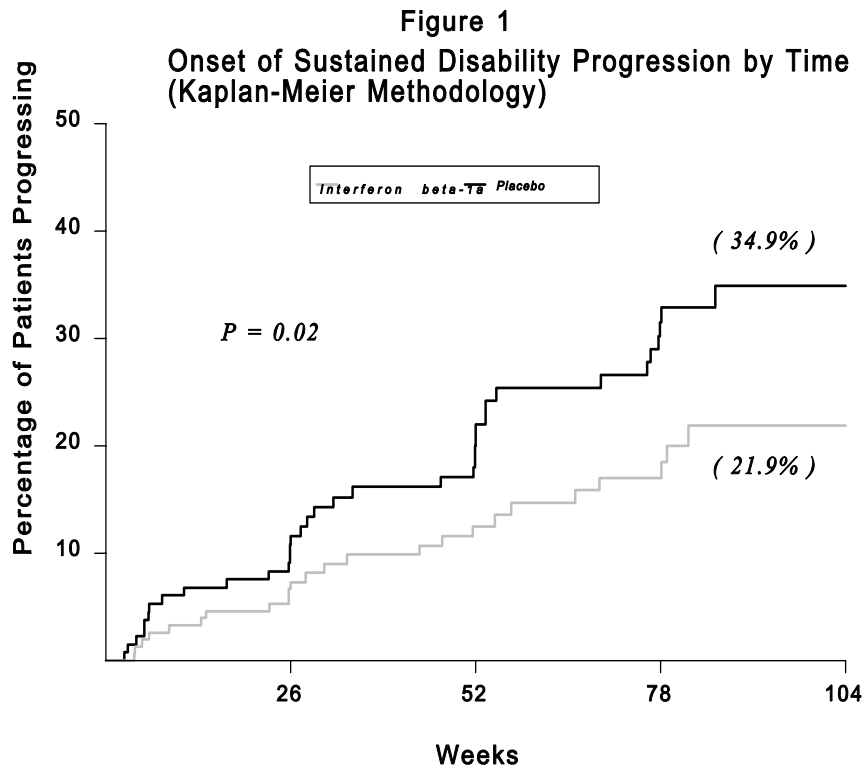
The bioequivalence of AVONEX Solution for Injection and AVONEX Powder for Injection was demonstrated in a randomised, single-blind, two-sequence, two-period, crossover study in 92 healthy volunteers. Both presentations were equivalent in terms of pharmacokinetic and pharmacodynamic effects with respect to the serum concentration of interferon beta and pharmacodynamic parameters: neopterin ( $E_{\text{max}}$  and  $E_{\text{AUC}}$ ) and  $\beta_2$ -microglobulin ( $E_{\text{max}}$ ).

The biological effects of AVONEX are sustained beyond the period in which levels are measurable in blood. Biological response markers (e.g. neopterin and  $\beta_2$ -microglobulin) increase within 12 hours of dosing and remain elevated for at least 4 days. Peak biological response markers are typically observed 48 hours after dosing.

### Clinical Trials

**Study NS26321.** The clinical effects of interferon beta-1a were studied in a randomised, multicentre, double blind, placebo-controlled study in male and female patients with relapsing forms of multiple sclerosis. In this study, 301 patients received either 30  $\mu\text{g}$  (6 million IU) of pilot scale interferon beta-1a ( $n = 158$ ) or placebo ( $n = 143$ ) by IM injection once weekly. Of the 301 patients, 282 completed 1 year on study and 172 completed 2 years on study. There were 144 patients treated with interferon beta-1a for more than 1 year, 115 for more than 18 months and 82 for 2 years.

As measured by the Kurtzke Expanded Disability Status Scale in the clinical trial, progression of disability was significantly reduced with interferon beta-1a treatment (see Figure 1). Interferon beta-1a reduced the risk of progression of disability by 37%. Over 2 years, a 32% reduction in the annual exacerbation rate was also demonstrated; no significant difference in exacerbation rate was seen in the first year of treatment. The clinical trial also showed a reduction in the number and volume of active brain lesions as shown by magnetic resonance imaging (MRI). Together with the clinical benefits, there was a significant decrease in MS activity markers such as those shown by MRI.



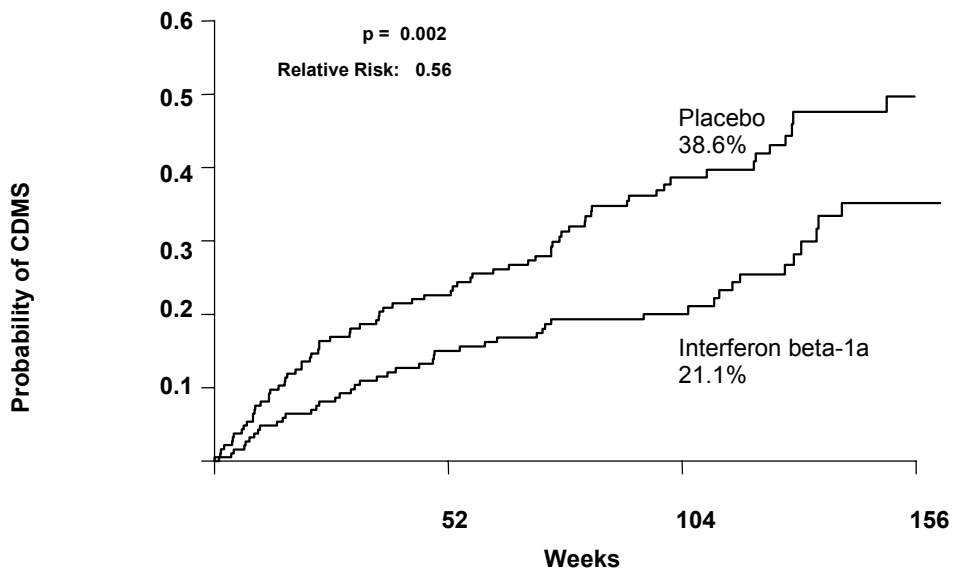
This trial was conducted using a product (BG9015) derived from a cell line which differs from the cell line used to derive the commercially available AVONEX [BG9418], but it is likely that these two products have similar clinical mechanisms and activity.

**Study C94-801.** Patients from Study NS26321 were eligible to enrol in an open-label safety extension trial. This study also enrolled interferon beta naïve and interferon beta experienced patients with MS. All patients received 30 µg interferon beta-1a by IM injection once weekly.

**Study C95-812.** The clinical effects of AVONEX have also been studied in patients who had experienced one demyelinating event and were at risk of developing MS based on the presence of brain MRI abnormalities characteristic of MS. In a randomised multi-centre, double-blind, placebo-controlled trial, patients received either 30 µg AVONEX (n=193) or placebo (n=190) by IM injection once weekly for up to 3 years. The initial demyelinating event was treated with a course of IV corticosteroids followed by oral corticosteroids.

Time to onset of clinically definite MS was significantly longer in patients treated with AVONEX (p=0.002). At 2 years, the estimated rate of onset of clinically definite MS was 21.1% and 38.6 % for AVONEX and placebo, respectively. AVONEX produced an overall reduction in the rate of development of clinically definite MS of 44% (95%CI, 19% - 62%) (see Figure 2). The clinical trial also showed a reduction in inflammatory disease activity in brain (measured gadolinium (Gd) enhancement) and reduction in brain lesions and disease burden (measured by T2) shown by MRI. At all time points (6, 12 and 18 months), compared to placebo, AVONEX significantly reduced the number of new or enlarging T2 lesions (p=0.01, p<0.001 and p<0.001 respectively), the volume of T2 lesions (p<0.001, p=0.004 and p<0.001 respectively), the number of Gd-enhancing lesions (p=0.03, p=0.02 and p<0.001 respectively) and the volume of Gd-enhancing lesions (p=0.03, p=0.03 and p<0.001 respectively).

**Figure 2**  
**Confirmed Clinically Definite Multiple Sclerosis (CDMS) by Time on Study**  
**(Kaplan-Meier Methodology)**



## Indications

AVONEX is indicated for the treatment of relapsing forms of multiple sclerosis.(MS).

AVONEX is also indicated in patients who have experienced a single demyelinating event and are at risk of developing clinically definite MS based on the presence of brain MRI abnormalities characteristic of MS.

## CONTRAINDICATIONS

AVONEX is contraindicated in patients with a history of hypersensitivity to natural or recombinant interferon beta, or any other component of the formulation. The lyophilised formulation of AVONEX Powder for Injection is also contraindicated in patients with a history of hypersensitivity to human serum albumin.

AVONEX is contraindicated in patients with current severe depression and/or suicidal ideation and in women who are or plan to become pregnant while on therapy.

## PRECAUTIONS

Patients should be advised of the abortifacient potential of interferon beta (see Use in Pregnancy).

### Flu-like Symptoms

Patients should be informed of the most common adverse events associated with AVONEX administration, including symptoms associated with the flu-like syndrome (see ADVERSE EFFECTS). Flu-like symptoms are most prominent at the initiation of therapy but decrease in frequency with continued treatment. An antipyretic analgesic may be given prior to the injection and for the next 24 hours to modulate possible flu-like symptoms.

### Seizure Disorders

Caution should be exercised when administering AVONEX to patients with a history of seizures, to those receiving treatment with antiepileptics, particularly if their epilepsy is not adequately controlled with antiepileptics. Patients who newly develop seizures with AVONEX therapy should be discontinued and an aetiological basis should be established. Appropriate anti-convulsant therapy should be instituted prior to resuming AVONEX therapy (see ADVERSE EFFECTS).

### Severe Renal Failure and Myelosuppression

Extra caution should be used in administering AVONEX to patients with severe renal failure and to patients with severe myelosuppression.

### Cardiac Disease

Patients with cardiac disease, such as angina, congestive heart failure or arrhythmia, should be closely monitored for worsening of their clinical condition during therapy with AVONEX. AVONEX does not have any known direct acting cardiac toxicity; however, symptoms of the flu-like syndrome seen with AVONEX therapy may prove stressful to patients with cardiac conditions.

### Hepatic Injury

Rare post-marketing cases of serious hepatic injury including autoimmune hepatitis, hepatitis and hepatic failure have been reported with beta-interferon treatment for MS; including very rare cases with AVONEX. In some patients a recurrence of elevated serum levels of hepatic enzymes has occurred upon AVONEX rechallenge. In some cases, these events have occurred in the presence of other drugs that have been associated with hepatic injury. The potential of additive effects from multiple drugs or other hepatotoxic agents (e.g. alcohol) has not been determined. It is recommended that liver function tests be undertaken prior to initiation of treatment with AVONEX and monitored periodically thereafter. Withdrawal of treatment with AVONEX should be considered if hepatic transaminase levels significantly increase or if they are associated with clinical symptoms such as jaundice. AVONEX should be initiated with caution in patients with a history of significant liver disease and in patients with active liver disease.

### Suicide and Depression

AVONEX should be administered with caution in patients with previous or current depressive disorders, in particular to those with antecedents of suicidal ideation (see CONTRAINDICATIONS). Depression and suicidal ideation are known to occur in increased frequency in the MS population and in association with interferon use. Patients treated with AVONEX should be advised to report immediately any symptoms of depression and/or suicidal ideation to their prescribing physician. Patients exhibiting depression should be monitored closely during therapy with AVONEX and treated appropriately. Cessation of therapy with AVONEX should be considered.

## Laboratory Monitoring

Laboratory abnormalities are associated with the use of interferons. Therefore, in addition to those laboratory tests normally required for monitoring patients with MS, complete and differential white blood cell counts, platelet counts, and blood chemistry, including liver function tests, are recommended during AVONEX therapy. Patients with myelosuppression may require more intensive monitoring of blood cell counts.

## Administration

AVONEX should be administered by intramuscular injection (IM) only.

If home use of AVONEX is prescribed by the physician, instructions in reconstitution and injection must be given to the patient and/or to others who may administer the injection. If a patient is to self-administer, the ability of that patient to self-inject intramuscularly should be assessed. The first injection should be performed under the supervision of an appropriately qualified health care professional. If home use is chosen, a puncture resistant container for disposal of used needles and syringes should be supplied to the patient. Patients should be instructed in the technique and importance of proper syringe and needle disposal and be cautioned against re-use of these items.

## **Impairment of fertility**

Menstrual cycle irregularities and associated progesterone concentration changes were observed in rhesus monkeys given doses of 50 µg (10 million IU)/kg SC of interferon beta-1a. These cycles were considered anovulatory. These changes were not seen at doses of 1.25 µg (0.25 million IU)/kg. The significance for humans is unknown. The effect of interferon beta-1a on male fertility is unknown.

## **Use in pregnancy (Category D)**

Interferon beta-1a was not teratogenic in rhesus monkeys at doses up to 50 µg (10 million IU)/kg SC. Abortifacient activity was evident at this dose but not at 1.25 µg (0.25 million IU)/kg.

There is limited information on the use of AVONEX in pregnancy. Initiation of treatment is contraindicated during pregnancy (see CONTRAINDICATIONS). Women of child-bearing potential should take appropriate contraceptive measures during treatment with AVONEX. If a patient becomes pregnant or plans to become pregnant while taking AVONEX, the patient should be informed of the potential hazards to the foetus and it should be recommended that the patient discontinue therapy.

## **Use in lactation**

It is not known whether interferon beta-1a is excreted in breast milk. Because of the potential for serious adverse reactions in nursing infants, a decision should be made whether to discontinue breast-feeding or AVONEX (interferon beta-1a) therapy.

## **Paediatric Use**

No formal clinical trials or pharmacokinetic studies have been conducted in children or adolescents. However, limited published data suggest that the safety profile in adolescents from 12 to 18 years of age receiving AVONEX 30 µg IM once per week is similar to that seen

in adults. There is no information on the use of AVONEX in children under 12 years of age.

### **Carcinogenicity/mutagenicity**

The carcinogenic potential of interferon beta-1a has not been investigated in animals or humans.

Interferon beta-1a was not genotoxic when tested in *in vitro* assays for gene mutations and chromosomal damage.

### **INTERACTIONS**

Clinical trial experience indicates that patients with MS can receive concomitant therapy with AVONEX and corticosteroid or ACTH treatment. Antidepressant and oral contraceptive therapy were co-administered in the clinical trial with no increase in adverse effects.

No specific information exists on interactions with other medications. Other interferons have been noted to reduce cytochrome P-450 oxidase mediated drug metabolism. Hepatic microsomes isolated from interferon beta-1a treated rhesus monkeys showed no influence of AVONEX on hepatic cytochrome P-450 metabolism activity. Adequate data in humans are not available to determine the effect of AVONEX on liver metabolism. As with other beta-interferon products, caution should be exercised when AVONEX is administered alone or concomitantly with drugs known to be associated with hepatic injury. Caution should be exercised when AVONEX is administered in combination with medicinal products that have a narrow therapeutic index and are largely dependent on the hepatic cytochrome P-450 system for clearance, e.g. antiepileptics and some classes of antidepressants.

As with all interferon products, proper monitoring of patients is required if AVONEX is given in combination with myelosuppressive agents.

### **ADVERSE EFFECTS**

#### **Clinical Trial Data**

The safety data for the use of intramuscular AVONEX are based on the studies described under Clinical Trials. The most common adverse event associated with the use of AVONEX was flu-like symptoms occurring within hours to days following an injection and consisting mainly of myalgia, fever, chills and asthenia. The incidence of these effects diminished with continued treatment, with only 16% of interferon beta-1a treated patients being affected in the last 6 months of Study NS26321.

Most adverse events were self-limiting and well tolerated. The most frequently reported adverse reactions resulting in discontinuation or the need for medication were flu-like symptoms and depression.

The data in the table below are derived from subjects treated with AVONEX 30 µg or placebo in Studies NS26321 and C95-812. Included are adverse events and selected laboratory abnormalities that occurred at an incidence of at least 2% higher frequency in the AVONEX-treated subjects than in the placebo group. Reported adverse events have been classified using standard COSTART terms.

<b>Adverse Event</b>	<b>% Placebo (n = 333)</b>	<b>% AVONEX (n = 351)</b>
<b>General Disorders and Administration Site</b>		
Headache	55	58
Flu-Like Symptoms	29	49
Pain	21	23
Fever	9	20
Asthenia	18	24
Chills	5	19
Infection	4	7
Abdominal Pain	6	8
Injection Site Pain	6	8
Chest Pain	2	5
Injection Site Reaction	1	3
Injection Site Inflammation	2	6
Toothache	1	3
<b>Cardiovascular Disorders</b>		
Migraine	3	5
Vasodilation	0	2
<b>Gastrointestinal Disorders</b>		
Nausea	19	23
<b>Blood and Lymphatic System Disorders</b>		
Anaemia	1	4
Ecchymosis Injection Site	4	6
<b>Musculoskeletal, Connective Tissue and Bone Disorders</b>		
Myalgia	22	29
Arthralgia	6	9
<b>Nervous System Disorders</b>		
Depression	14	18
Dizziness	12	14
<b>Respiratory Disorders</b>		
Upper Respiratory Tract Infection	12	14
Sinusitis	12	14
Bronchitis	5	8
<b>Skin and Subcutaneous Tissue Disorders</b>		
Alopecia	2	4
<b>Special Senses</b>		
Eye disorder	2	4
<b>Urogenital System Disorder</b>		
Urinary tract infection	15	17
Urine constituents abnormal	0	3

Other adverse events reported for relapsing MS patients treated with AVONEX 30 µg IM once weekly in clinical trials including open label studies, are shown below with frequencies expressed per 100 patient years.

<b>Body System</b>	<b>Event</b>
<b>General Disorders and Administration Site</b> Common	Fatigue, malaise, night sweats
<b>Gastrointestinal Disorders</b> Common	Vomiting, diarrhoea
<b>Metabolic and Nutrition Disorders</b> Common	Anorexia
<b>Musculoskeletal, Connective Tissue and Bone Disorders</b> Common	Pain in extremity, musculoskeletal stiffness
<b>Psychiatric Disorders</b> Common	Insomnia
<b>Nervous System Disorders</b> Common	Muscle spasticity, hypoesthesia
<b>Respiratory Disorders</b> Common Rare	Rhinorrhoea Dyspnoea
<b>Skin and Subcutaneous Disorders</b> Common	Increased sweating, rash (including vesicular rash)
<b>Urogenital System Disorders</b> Uncommon	Metrorrhagia and/or menorrhagia
Very Common: $\geq 10/100$ person years ( $\geq 10\%$ ) Common: $\geq 1/100$ and $< 10/100$ person years ( $\geq 1\%$ and $< 10\%$ ) Uncommon: $\geq 0.1/100$ and $< 1/100$ person years ( $\geq 0.1\%$ and $< 1\%$ ) Rare: $\geq 0.01$ and $< 0.1/100$ person years ( $\geq 0.01\%$ and $< 0.1\%$ ) Very rare: $< 0.01/100$ person years ( $< 0.01\%$ )	

One patient in the open label study attempted suicide. In the placebo-controlled trials, one patient on placebo attempted suicide, but none in the interferon beta-1a treated groups. The incidence of depression was 9% in each group in Study NS26321. In Study C95-812, 20% of subjects treated with AVONEX experienced depression compared with 13% on placebo.

Four patients receiving AVONEX 30 µg IM once weekly in the placebo-controlled studies experienced seizures (1%), whilst no seizures occurred in the placebo groups. Three of these patients had no prior history of seizures. It is not known whether these events were related to MS, to AVONEX or to a combination of both (see PRECAUTIONS).

Safety data have also been generated on interferon beta-1a in patients with hepatitis given 15 µg to 75 µg (3 to 15 million IU) subcutaneously 3 times weekly for up to 6 months. In the patients with hepatitis, the most common adverse event was injection site inflammation (52%), reflecting the relationship between subcutaneous injection and such reactions. In other respects, the incidence of adverse events was similar to those seen in the patients with MS.

### **Post-Marketing Data**

Suspected adverse reactions reported in post-marketing experience that are not already included under "Clinical Trial Data" are shown below.

<b>Body System</b>	<b>Event</b>
<b>General Disorders and Administration Site</b> Rare	Weight loss
<b>Cardiac Disorders</b> Rare Very Rare	Palpitations, tachycardia Arrhythmia, cardiomyopathy, congestive heart failure
<b>Endocrine Disorders</b> Very rare	Hyperthyroidism, hypothyroidism
<b>Hepatobiliary Disorders</b> Rare Very Rare	Abnormal liver function tests, hepatitis Autoimmune hepatitis
<b>Blood and Lymphatic System Disorders</b> Rare Very Rare	Decreased peripheral blood count in all cell lines Pancytopenia, profound thrombocytopenia
<b>Immune System Disorders</b> Frequency unknown	Anaphylaxis, allergic reaction
<b>Infections and infestations</b> Very Rare	Injection site abscess or cellulitis that may require surgical intervention
<b>Musculoskeletal, Connective Tissue and Bone Disorders</b> Very Rare Frequency unknown	Arthritis Lupus erythematosus syndrome
<b>Psychiatric Disorders</b> Rare Very Rare Frequency unknown	Anxiety, confusion Psychosis Emotional lability, suicide
<b>Nervous System Disorders</b> Rare Frequency unknown	Transient episodes of hypertonia and/or severe muscle weakness, <sup>†</sup> paresthesia Seizures, syncope
<b>Skin and Subcutaneous Disorders</b> Rare	Pruritus, urticaria
Very Common: $\geq 10/100$ person years ( $\geq 10\%$ ) Common: $\geq 1/100$ and $< 10/100$ person years ( $\geq 1\%$ and $< 10\%$ ) Uncommon: $\geq 0.1/100$ and $< 1/100$ person years ( $\geq 0.1\%$ and $< 1\%$ ) Rare: $\geq 0.01$ and $< 0.1/100$ person years ( $\geq 0.01\%$ and $< 0.1\%$ ) Very rare: $< 0.01/100$ person years ( $< 0.01\%$ )	

† Transient neurological symptoms including episodes of hypertonia and/or severe muscle weakness that prevent voluntary movement may occur after injections. These episodes are of limited duration, occur early in the course of therapy and may recur after subsequent injections. In some cases these symptoms are associated with flu-like symptoms.

### Serum neutralising activity

In the pivotal (NS26321), placebo-controlled, MS study with product BG9015, fifteen percent of treated patients had serum neutralising activity levels above those found in the placebo group. There was no correlation between the presence of serum neutralising activity and

progression in disability or the frequency of adverse events, most likely due to the relatively small number of subjects studied who developed neutralising antibodies.

Improvements in the manufacturing process following this study have resulted in a less immunogenic molecule. This has been demonstrated in subsequent studies in which AVONEX, the commercially available formulation, had a neutralising antibody incidence of 2-5%.

In a dose comparison study (C94-805) in patients with relapsing MS who only received commercial product BG9418, the incidence of serum neutralising activity was 2.3% and 5.8% (titre  $\geq$  20) for the 30  $\mu$ g and 60  $\mu$ g treatment groups, respectively.

In the open label study C94-801, 5% of patients developed serum neutralising activity at a titre of  $\geq$  20.

In patients who had experienced one demyelinating event and were at risk of developing MS based on the presence of characteristic brain MRI abnormalities (Study C95-812), 2% of treated patients, all of whom had received only commercial product BG9418, developed serum neutralising activity at a titre of  $\geq$  20.

In the open-label study to evaluate the immunogenicity and safety of AVONEX Solution for Injection (C98-844), 4% of patients had serum neutralising antibodies at a titre of  $\geq$  20.

In the dose comparison study of 30  $\mu$ g AVONEX versus 60  $\mu$ g AVONEX in 802 subjects with relapsing-progressive and relapsing-remitting MS (Study C94-805), it was demonstrated that the development of neutralising antibodies resulted in a decrease in clinical efficacy. The neutralising antibody positive (Nab +ve) patient group had an annual relapse rate 39% (95%CI; 0.8% - 91%) higher than the neutralising antibody negative group (0.97 vs 0.70,  $p=0.04$ ) during months 12-48. The rate of change in mean EDSS was also higher in the Nab +ve group ( $p=0.01$ ) indicating greater disability progression in this group. Data from the study also show, in the Nab +ve group, a greater change in the number of (Gd)-enhancing lesions on MRI at month 24 ( $p=0.02$ ) and T2 lesions on MRI at months 24 ( $p=0.05$ ) and 36 ( $p=0.09$ ).

The Consortium of MS Centres concluded that the clinical sequelae of antibody-mediated decreased bioactivity depend on the duration and severity of decreased bioactivity and the underlying activity of the patient's MS. Thus, the persistence of high levels of anti-interferon beta antibodies in patients with active MS will eventually lead to clinical evidence of loss of efficacy of interferon beta.

## **DOSAGE AND ADMINISTRATION**

The recommended dosage of AVONEX for the approved indications is 30  $\mu$ g (6 million IU) injected IM once a week.

An antipyretic analgesic may be given prior to the injection and for the next 24 hours to modulate the possible flu-like symptoms associated with AVONEX.

AVONEX Powder for Injection and AVONEX Solution for Injection are supplied to patients with a 30 mm, 23 gauge needle for IM injection included in the pack. Doctors may prescribe a 25 mm, 25 gauge needle to patients for whom such a needle is appropriate to administer an IM injection. Sites for injection include the thigh or upper arm unless recommended otherwise by the prescribing physician.

Patients may give themselves the injection provided that they are physically capable, have been appropriately instructed in intramuscular injection technique, and are under medical supervision. In some cases it may be appropriate for a carer to give the injection under the same provisions. The first injection should be given under the supervision of an appropriately qualified health care professional (see PRECAUTIONS).

Before proceeding, consult the Directions for Use provided with AVONEX. The Directions for Use contain detailed stepwise instructions.

**Powder for Injection:** Connect the prefilled syringe of 1.1 mL Water for Injections to the BIO-SET® device and advance the integral needle into the AVONEX vial. Inject the supplied diluent slowly into the vial to avoid foaming. Gently swirl until all the material is dissolved. DO NOT SHAKE.

The reconstituted product should be inspected and if it contains particulate matter or is other than colourless to slightly yellow, the vial should be discarded. After reconstitution, the contents of the vial, which now contains 30 µg (6 million IU) of interferon beta-1a in 1 mL, should be withdrawn. The formulation does not contain a preservative. To reduce microbiological hazard, use as soon as practicable after reconstitution. If storage is necessary, hold at 2°C to 8°C for not more than 6 hours. Any unused portion should be discarded.

**Solution for Injection:** The solution for injection should be inspected and if it contains particulate matter or is other than colourless to slightly yellow in colour, the pre-filled syringe should be discarded. AVONEX should be removed from the refrigerator and allowed to warm to room temperature (15°C to 30°C) for approximately 30 minutes before injection. Do not use external heat sources such as hot water to warm the AVONEX Solution for Injection. The formulation does not contain a preservative. Each pre-filled syringe of AVONEX contains a single dose only. Any unused portion of the pre-filled syringe should be discarded.

## OVERDOSAGE

There are no reports of overdosage. In cases of suspected overdosage, patients should be admitted to hospital for observation and given appropriate supportive treatment.

## PACKAGE QUANTITIES

### Powder for Injection

AVONEX Powder for Injection is supplied as a lyophilised powder in a single use vial containing 30 µg (6 million IU) of interferon beta-1a. The AVONEX (interferon beta-1a) vial has a BIO-SET® device attached. This contains an integral needle, used for reconstitution only. Diluent is supplied in a pre-filled syringe (Water for Injections).

AVONEX Powder for Injection is available in packs of 4 blister trays. Each blister tray contains 1 vial of AVONEX with attached BIO-SET device (with integral needle used for reconstitution only), 1 pre-filled syringe of diluent and one needle used for intramuscular administration.

### Solution for Injection

AVONEX Solution for Injection is supplied in a single use pre-filled syringe containing 30 µg

(6 million IU)/0.5 mL of interferon beta-1a.

AVONEX Solution for Injection is available in packs of 4 blister trays. Each blister tray contains one pre-filled syringe of AVONEX and one needle used for intramuscular administration.

## **PHARMACEUTICAL PRECAUTIONS**

Contains no antimicrobial agent. Product is for single use in one patient only. Discard any residue.

### **Powder for Injection**

AVONEX Powder for Injection should be stored below 25°C. DO NOT FREEZE. Reconstituted solution should be used as soon as possible. If necessary, store at 2°C to 8°C and use within 6 hours. Protect from light. DO NOT FREEZE. It should not be used after the expiry date on the package.

### **Solution for Injection**

AVONEX Solution for Injection should be stored in a refrigerator at 2°C to 8°C. Protect from light. DO NOT FREEZE. Each blister tray of AVONEX can be stored at room temperature (below 30°C) for up to seven days. In order to protect from light, keep AVONEX in the original sealed tray until required. It should not be used after the expiry date on the package.

## **MEDICINE CLASSIFICATION**

Prescription Medicine

## **NAME AND ADDRESS**

Pharmacy Retailing (NZ) Limited  
trading as Healthcare Logistics  
58 Richard Pearse Drive  
Airport Oaks, Auckland

## **DATE OF PREPARATION**

04 September 2009

AVONEX® and BIOGEN® are registered trademarks of Biogen Idec Inc.

BIO-SET® is a registered trademark of BIODOME.